

October 2016

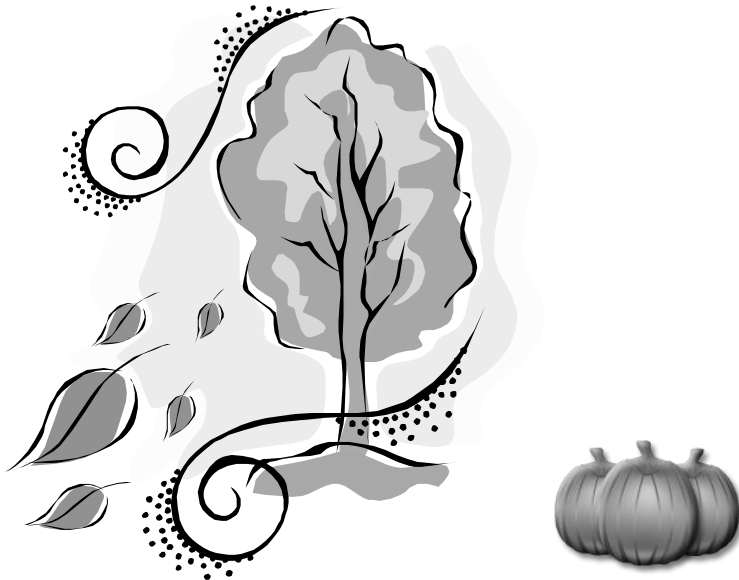
Message from the President

If you didn't sleep under a quilt last night, you probably wish that you had. It does feel like fall has arrived this morning.

So many thanks to Carol Moulton for bringing block of the month back this year! It has always been one of my favorite features in every guild that I have belonged to. Guidelines are the same as before. For each block that you bring in, you will receive one ticket with two parts. You keep one and the other one goes into a bag for a drawing. Whoever wins the drawing can do what she wants with the blocks - donate the blocks to charity quilts, set the blocks and then donate the quilt top, or set them and keep it for yourself. My "Swirls" are all ready to go and I can't wait for next month's block.

Thought for the month - as I get older, what I consider to be fabric scraps has gotten larger. Is it just me or has that happened to others as well?

Sally=



Officers

President
Sally Cabell
586-2244

Vice President
Donna Hamel
888-2262

Secretary
Grace Sweet &
244-7123
Robin Wright
635-9550

Treasurer
Rita Lehouillier
888-6465

Program Chairman
Cindy Smorgans
644-5880

Martha Corey
635-7056

Sheila Cross
635-7469

Newsletter Editor
Julie Rohleder
888-3834

Sunshine Chairman
Donna Merriam
888-3691

Membership Chairman
Jan Kuhn
851-8341

Charity Quilts
Marion Seasholtz
635-2731

Common Threads
Quilt Guild
meets the first Thursday of
every month
at 6:30 PM at the
Sterling View Club House in
Hyde Park
Dues are \$15 annually

Secretary's Report

September 1, 2016

President Sally Cabel opened the meeting at 6:30

Jan Kuhn collected **dues** of \$15.00 each for the following year. Twenty-nine members signed up.

Secretary: Grace Sweet and Robin Wright will share the secretaries duties.

New Member - Lisa Vilord from Morrisville

No guests

Seven **birthdays** in September - each gets to choose a fat quarter

Drawings: Just for coming - Grace Sweet, food for food shelf - Kathleen Manning

Minutes of the August meeting were accepted.

Treasurer's report - Rita Lehouillier was absent. No report.

Newsletter - Julie Rohleder asks that news be sent in by Sept. 15.

Sunshine - Donna Merriam reports that no cards were sent.

Program committee - uncertain of next month's program

Old business - the library is open. Sharon Perry, the former librarian, had an allotment of \$150 for new books. She often found sale items.

Quilt show chair needed soon. Two could share the duties. Need to have the chair in place by November to begin to organize for the 2017 show.

Rhonda left scrap booking material. Members are encouraged to take what they like.

Block of the month - Carol Moulton It is a pattern called Swirl - dark green, light green and cream. The finished size is 10 and 1/2 inches.

Hyde Park Home Days are the weekend of Sept. 17. Would someone like to display the raffle quilt and sell tickets? No cost to the Guild. No interest.

Sunshine Quilts - Marion Seasholtz made a report. There will be work days at Sterling View on Saturday, Sept. 17 and Oct. 29 from 9 - 2. The guild gives out about 100 lap quilts annually. Five bed size quilts were given to the Clarina Howard Nichols Center. Donna Hamel will take some to Forest Hills. Prize drawings for people that have made sunshine quilt tops were won by Ginny Moody, Jan Kuhn and Donna Hamel.

Raffle tickets and photos for the raffle quilt have been distributed by Andrea Blaisdell.

New Business - a quilt frame is for sale at the Holy Cross church in Morrisville.

Show and tell

Program led by Cindy Smorgens. She asks that people jot down ideas for demonstrations. Would people like a Flea Market evening? How many sellers?

Challenge quilt project - black and white plus the color that people drew as they came this evening. Any size, or even clothing, any method. Bring the item in March to share. Bring it in a brown paper bag so that others can guess who made the item.

Program - Precuts

Martha Corey had made a display showing samples of various precuts.

Charm pack - 5" squares - 42 pieces

Mini Charm - 2 and 1/2" squares - 42 pieces

Honeycomb - hexagon - 40 pieces

Turnover triangles

Layer cake - 10" squares

Jolly bar - 5"x10" rectangles - 42 pieces

Honey buns - 1 and 1/2" squares - 40 pieces

Jelly roll - 2 and 1/2 " x 43" - 42 pieces

Dessert - 5"x44" - 40 pieces

Sheila Cross showed a jelly roll - 2 and 1/2" and a noodle - 2". She had made a bag, a table runner and a quilt out of a jelly roll. Stitch all the strips of a jelly roll together to make 1600". To assemble the quilt cut the first 18" off so that the seams are staggered. The seams may be mitered. A number of members shared items made from precuts including a beach bag using mesh fabric.

Ellie Murphy won a charm pack.

The meeting was adjourned at 7:45.

Calendar

| | |
|--|--|
| October 6 th | Regular Meeting, 6:30 PM Sterling View Clubhouse |
| October 1 st & 2 nd & 15 th & 16 th | Sewing at Johnson Town Hall |
| October 29 th | Sunshine Quilt Workshop Sterling View Clubhouse 9 AM - 2-ish PM |
| Tuesdays | Hand work at the Charlemont Restaurant in Morrisville from 9 - 11 AM |

FOR SALE : one Hampton Ridge set of blocks all set to sew. I had to have it and now know that I will never touch it. Half price - \$150.00.
Sally Cabell, 586-2244.



Happy Birthday to:

| | |
|--|--------------------------------|
| <i>Anne Harmon</i> | <i>October 6th</i> |
| <i>Edna Snow & Lois Keith</i> | <i>October 8th</i> |
| <i>Carolyn Babcock</i> | <i>October 9th</i> |
| <i>Flo Verge & Linda Worth</i> | <i>October 27th</i> |

Program:

We thank you for your input on the sign-up sheets last meeting. We also thank everyone for bringing in so many samples of quilts made from precuts. We were told by many that it was an informative and enjoyable program. Martha's display of the various precuts will be at the next few meetings for everyone to review. Jenny Doan's YouTube videos are a great way to see how many quilts can be made from precuts. Her website is missouriquiltco.com. You can sign up for her daily deals which is most often a precut package. We also have many books in the library with ideas for those precuts. Make sure you sign books out. There should be a card in each one to fill out. Some of us will lend out our Missouri Star Quilt Company Block magazines too.

At the Oct. meeting two people will set up flea market tables, so plan to come with some extra cash as I'm sure they will have something you will need. We'd like to keep this going for a few months to give all those that signed up a chance to sell. A couple people could get together and have one table too.

We hope to show a couple videos at the Oct. meeting on subjects you all have shown interest in.

I hope many of you are planning to take the challenge (you will find the rules elsewhere in this newsletter). The chosen color does not have to be a solid.

Happy Sewing
Cindy, Sheila, and Martha

Treasurer's Report

August 14, 2016 - September 10, 2016

| | | |
|------------------------------|--|--------------------------|
| Cash Forward August 13, 2016 | | \$3,834.52 |
| Deposits: | | |
| 9/2/16 | Membership Dues | \$ 480.00 |
| | Total Revenue | \$4,314.52 |
| Expenses | | |
| | Ck. # | No expenses this period. |
| | Total Expenses | \$ - |
| | Cash Balance September 10, 2016 | \$4,314.52 |

Rita Lehouillier



Next Meeting:

Four things to remember:

- 1. Show and Tell*
- 2. Food for the Food Shelf*
- 3. Blocks of the Month*
- 4. DUES ARE DUE!!*

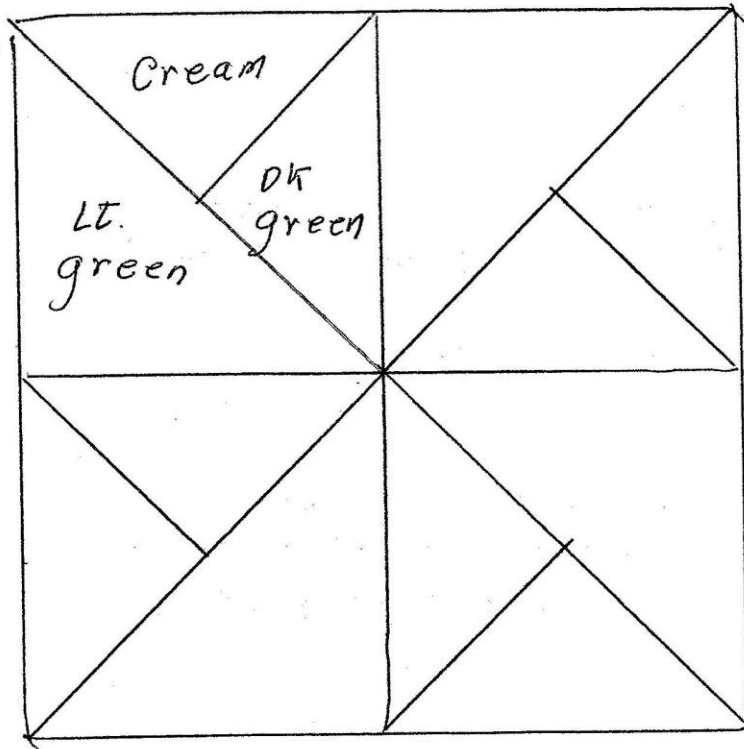
October Block of the Month

Make as many blocks as you would like. Each block you bring in gets you a ticket for the drawing for all of the blocks to do with as you would like. (More blocks equals more chances !)

SWIRL

- 1) From dark green and cream, cut 1 $6 \frac{1}{4}$ " square
Cut each square on both diagonals to make 4 triangles.
- 2) From light green, cut 2 $5 \frac{7}{8}$ " squares
Cut each square on one diagonal to make 4 triangles
- 3) Sew small triangles together to form a large triangle
- 4) Sew large green triangle to 2 color triangle, there will be 4 large squares
- 5) Sew 4 large squares together in a pinwheel pattern

Unfinished square should be $10 \frac{1}{2}$ inches.



The Black and White Challenge

The program committee has put forth a challenge. Should you take the challenge, you will be doing a project with black and white fabrics and one other color which you randomly chose at the last meeting. You can use as many black and white fabrics as you want, but only one of the color you chose. The project you choose to make can be anything from bed size quilt, smaller items, bags, and even clothing, etc. Any sewing methods can be used.

You have six months to finish your project and we will have a showing at the March Meeting. You will bring your finished project to the meeting in a brown bag. Someone will lay the projects out and we will all guess who made which one.

(If you were not at the last meeting, and would like to do the challenge, you may choose your own color or we will have the bag to choose from again at the next meeting.)

Let's all take the challenge!
Cindy, Sheila and Martha

Common Threads Sunshine Quilt size guidelines:

Hospital birthing center: 38" x 38" up to 40" x 40"

Lap quilt: in all themes; men, women, children 42" x 50"

Twin: 65" - 72" wide x 90" x 100" long

Full/Queen: 90" - 92" wide x 98" - 104" long

These are approximate sizes.

We are trying to keep some of the 2 larger sizes on hand.

The size that we use the most of right now is the lap size.

Sunshine Quilt Workshop

October 29th at Sterling View Clubhouse. Starts at 9 AM and runs to about 2 PM.

Bring your lunch and Marion will bring dessert!

We will be layering and binding quilts and cutting fabric to be put into kits, so bring yourself, your machine if you can, a cutting board & rotary cutter, and a sewing kit with needles & thimble.

2016 Donations of Sunshine Quilts

Donations are recorded annually from the quilt show. We usually give out close to 100 in a year.

This is what we have donated so far since October 2015:

1 lap quilt - for a fundraiser

1 bed and 2 kids quilts Fire Victims

1 lap - David Sargent

10 lap Maple Lane in Barton

16 lap The Manor

12 lap Home Health

10 lap Out & About

14 lap Meals on Wheels

5 Bed (ish) Clarina Howard Nichols Center
(women's shelter)

1 lap Morrisville VFW Lifeline fundraiser

14 lap Craftsbury Community Care Center

10 lap Forest Hills

Total so far: 95

If anyone knows of someone who could use a lap quilt for comfort - or if you hear about a fire please let me know. We would welcome help getting quilts to anyone in need.

Marion Seasholtz 635-2731 marion@windsedgestudio.com