

# September 2018

## Message from the President

Hello everyone,

I am loving this weather a lot better than the recent weeks, it makes it easier to work outside. The chipmunks are stealing the seeds from my sunflowers and the crickets are starting to chirp in the evening so we all know what that means...end of summer!

I really enjoyed the Barn Quilt talk and workshop by Suzi Parron. I hope everyone else did. Thank you to Sharon Perry for making it all happen! I think every barn should have one!

September starts a new year for the guild so don't forget your dues for the next meeting. I am taking suggestions for programs and have a couple of things in the works so bring your ideas to the next meeting.

See you all in a couple of weeks and have a great Labor Day Weekend!

Andrea Blaisdell



### Officers

President  
**Andrea Blaisdell**  
635-8389

Vice President  
**Lisa Vilord**  
888-7239

Secretary  
**Grace Sweet &**  
244-7123  
**Robin Wright**  
635-9550

Treasurer  
**Lois Lemaire**  
253-7789

Program Chairman  
**By the Month**

Newsletter Editor  
**Julie Rohleder**  
888-3834

Sunshine Chairman  
**Donna Merriam**  
888-3691

Membership Chairman &  
Librarian  
**Jan Kuhn**  
851-8341

Charity Quilts  
**Marion Seasholtz**  
635-2731

Common Threads  
Quilt Guild  
meets the first Thursday of  
every month  
at 6:30 PM at the  
Sterling View Club House in  
Hyde Park  
Dues are \$15 annually

# Secretary's Report

**Called to order:** 6:30 pm

**# Present:** Full house

**Guests:** Guests were introduced

**Birthdays:** 6 members celebrated birthdays in August.

**Drawings:** Just for coming goes to Lois Keith and the Food Shelf goes to Kathleen Manning.

**Secretary's Report:** Sharon moved to approve, seconded and passed. Correction - Ricky Tims had some property lost but not the house.

**Treasurers Report:** Sharon moved to approve, seconded and passed.

**Sunshine Cards:** None this month

**Block of the Month -** Carol Moulton- Jane Payne won the block of month blocks. Carol has decided to change to a mystery quilt for the next several months. Information distributed, will be added to the newsletter.

**Sunshine Quilts:** If you have any quilts to donate please place your name on it so you can get credit for it. Donations can also be given to Martha or Andrea and they will get them to Marion.

**Old Business:**

**Antiques and Uniques:** We made \$91 in sales of smaller items and were able to talk with people about the upcoming quilt raffle. The lot fee was \$50.

**New Business:**

Martha shared local project that is looking for volunteers, the Johnson Public Library is making Flannel Board stories. They are looking for people interested in helping make these. Let Martha or the library know if you are interested in helping.

**Reminder from membership:** September is membership month.

**Sew and Tell**

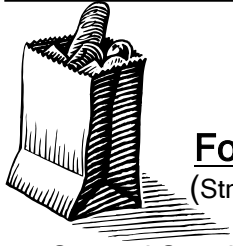
Program presented by Suzi Parron, Barn Quilt classes on Saturday.

**Adjourned:**



# Calendar

Sept 6th Regular Meeting 6:30 PM  
Dues are Dues!



## Food Shelf Wish List

(Straight from the Food Shelf)

Canned Spaghetti Sauce	Toothpaste
Canned Fruit	Toothbrushes
Canned Vegetables	(for children, too!)
Macaroni & Cheese	Soap
Canned Pasta	Shampoo
Soup	Coffee
Cereal	Healthy Snacks
Tuna	Laundry Detergent
Personal Items for Women	Dish Detergent



## Happy Birthday to:

<i>Melody Chase</i>	<i>September 2<sup>nd</sup></i>
<i>Elaine Foster</i>	<i>September 8<sup>th</sup></i>
<i>Martha Corey</i>	<i>September 18<sup>th</sup></i>
<i>Pat Slack</i>	<i>September 26<sup>th</sup></i>
<i>Jane Langdell</i>	<i>September 27<sup>th</sup></i>

## BLOCK OF THE MONTH TO BE A MYSTERY QUILT

This year instead of doing a new block each month, we will be doing a mystery quilt. Each month will be a new step in the quilt. (There are 7 steps in all.) What will it be when it's done? That's the mystery!

A mystery quilt is the fun way to make a quilt and keep the final look a "mystery" until the last steps of assembly.

## Dues are Due in September

Yes it is that time of year again. Please bring \$15 in cash or check to the September meeting.

Not going to be here in September? You can mail them to:

Jan Kuhn  
109 Oakwood Drive  
Hyde Park, VT 05655

Also let her know of your phone number, mailing address, or email address has changed.

Anyone who does not renew by the end of the November meeting will be dropped from the Newsletter mailing list, so be sure to get your dues paid!

## Treasurer's Report

Cash on hand	End of July 2018		\$3,827.89
Deposits:			
	Barn Quilts (26 people)	\$1,170.00	
	Antiques & Uniques	\$ 91.00	
		<hr/>	
		\$1,261.00	\$5,088.89
Expenses:			
	Julie Rohleder (Newsletter)	\$ 14.00	
	Supplies - Barn Quilt Meeting & Workshop	\$ 70.50	
	Suzi Perron Fees	\$1,650.00	
		<hr/>	
		\$1,734.50	\$3,354.39

Submitted by Lois Lemaire



*Next Meeting:*

*Three things to remember:*

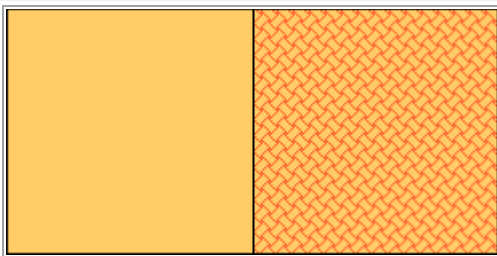
- 1. Show and Tell*
- 2. Food for the Food Shelf*
- 3. Dues !!!!*

## Mystery Quilt Part One

**Size?** I hope you'll have some fun with this one - I won't spoil the mystery - but just so you know a little of what you'll be making: it's a wall quilt of 40" x 40" approximate finished size. It is suitable as a project to make larger for a full size quilt (and I'll talk a little about that at the end of the project).

**Technique?** It's easy and you'll learn a neat technique that I know you'll use again and again. If you are new to quilting you will be able to do this one. If you are an experienced quilter you will have fun and see a new opportunity here. You can rotary cut all the pieces easily, no templates are needed.

**Fabrics?** You could do the whole quilt with only 4, but I love scrappy quilts so I'll encourage you to use some variety for some of the fabrics.



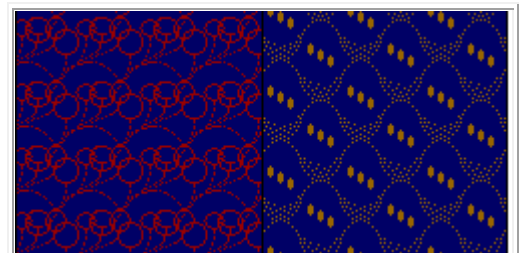
**Fabric A Example**

### **Fabric A - lightest and brightest**

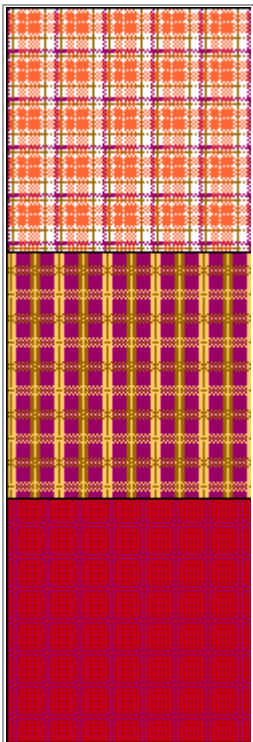
This fabric should stand out from the others. A yellow-gold, yellow-mustard is what I'm using in my sample. But you could use a bright yellow, lime, fuchsia - if you use a printed fabric the bright color should be prominently visible. Fabric A is a good choice for a scrappy look if you have 3-4-5 fabrics with similar coloration but different prints.

### **Fabric B - deepest and darkest**

This fabric will be a main background and should be deep toned, it could be navy, black, purples. A swirled deep-tone batik would be nice too. Fabric B is also a good choice for scrappy look, if you want to have a scrap look, use at least 4-5 fabrics for the B section.



**Fabric B Example**



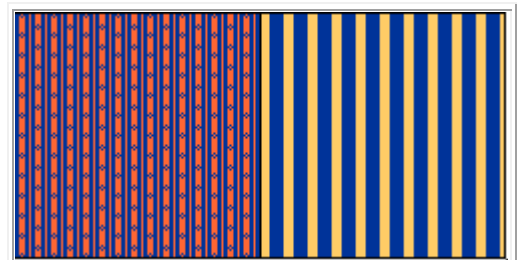
**Fabric C**  
**plaids or print**

### **Fabric C - A plaid or multi-print**

This should be a medium value color fabric. I recommend a plaid, but a medium size print with several colors in it would be OK, too. Picking up a bit of the color from Fabric A isn't a bad idea - but this fabric must be intermediate in depth of color between A and B. My choice for my sample is the middle plaid shown here with the maroon background and gold and green lines.

### **Fabric D - a bold stripe**

This fabric should be a bold stripe which contrasts strongly with A, B, C fabrics. The stripe on the right is my choice for my sample. There needs to be a clear contrast especially between the plaid C fabric and the D stripe.



**Fabric D - bold stripe**

### **How Much Fabric?**

Yardage is given for 42" width fabric, strips are to be cut selvedge to selvedge. I've allowed a little extra, but if you often make "bad cuts" you might want to add 1/4 yard to my figures.

**Fabric A: 3/4 yard light-bright, 1 yd for extra margin (good if mixed scraps)**

**Fabric B: 3/4 yard deep (good if mixed scraps)**

**Fabric C: 2/3 yard plaid or medium print**

**Fabric D: 2/3 yard bold stripe**

### **How to Cut? (selvedge to selvedge)**

**Fabric A: cut 1 strip 4.5" wide and 8 strips 2.5" wide**

**Fabric B: cut 4 strips 4.5" wide and 2 strips 2.5" wide**

**Fabric C: cut 4 strips 4.5" wide and NO 2.5" strips**

**Fabric D: cut 4 strips 4.5" wide and NO 2.5" strips**

I always wash and iron my fabric before cutting, but if you like to work with unwashed fabric, use all unwashed.