

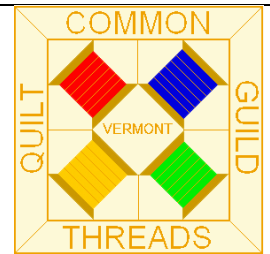
Volume 3

# ON POINT

The Official Newsletter  
of the Common Threads Quilt Guild of Lamoille County  
in Hyde Park, Vermont

<http://commonthreadsvt.org/>

[CommonThreadsVT@gmail.com](mailto:CommonThreadsVT@gmail.com)



Issue 10

## The President's Block

Hello Friends,

I spent May 10<sup>th</sup> and 11<sup>th</sup> delivering beautiful bouquets of flowers for a local florist, and what fun it was bringing smiles to the recipients. What a great assortment of smells and colors!

As we were driving around, the daffodils and tulips were in full glorious color; soon the lilacs will be showing off. As you read this I hope you all had a wonderful Mother's Day.

Get out and enjoy the colors of spring because before you know it the pesky black flies will be out.

Your President,  
Cheryl Leach  
2023-2024



### President

Cheryl Leach 802-888-5102

### Vice President

Denise Mayo 802-585-5876

### Secretary

Grace Sweet 802-244-7123  
Robin Wright 802-635-9550

### Treasurer

Cheryl Leach 802-888-5102

### Programs

Rotating Members

### Newsletter

Sharon Perry 802-326-3135

### Sunshine Cards

Hilda Tallman 802-888-3808

### Membership & Librarian

Jan Kuhn 802-851-8341

### Sunshine Quilts

Marion Seasholtz 802-635-2731

Common Threads Quilt Guild  
meets the 2<sup>nd</sup> Thursday,  
March through December,  
at 6:30 p.m. at the  
Sterling View  
Community Center  
in Hyde Park

Dues = \$20 annually



### 2023 - 2024 Guild Calendar

**DOORS OPEN AT 6:00 PM;  
MEETING STARTS AT 6:30 PM**

September 14<sup>th</sup> Favorite Quilting  
Notion/Tool, Technique, or Book  
October 12<sup>th</sup> "Following the Franklin  
County Barn Quilt Trail"  
with Sharon Perry  
November 9<sup>th</sup> Christmas Tree Demo  
with Denise Mayo

### 2023 - 2024 Guild Calendar

**DOORS OPEN AT 6:00 PM;  
MEETING STARTS AT 6:30 PM**

December 14<sup>th</sup> Potluck & Strip Poker  
January NO MEETING  
January 20<sup>th</sup> Sunshine Work Day  
February NO MEETING  
March 14<sup>th</sup> Trunk Show  
with Candace Hassen via ZOOM

### 2023 - 2024 Guild Calendar

**DOORS OPEN AT 6:00 PM;  
MEETING STARTS AT 6:30 PM**

April 11<sup>th</sup> Playing Games  
May 9<sup>th</sup> Playing Games  
June 13<sup>th</sup> Trunk Show With  
Linda Diak of Chester  
July 11<sup>th</sup> TBD  
August 8<sup>th</sup> Summer Potluck

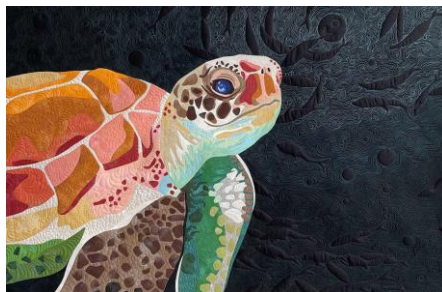
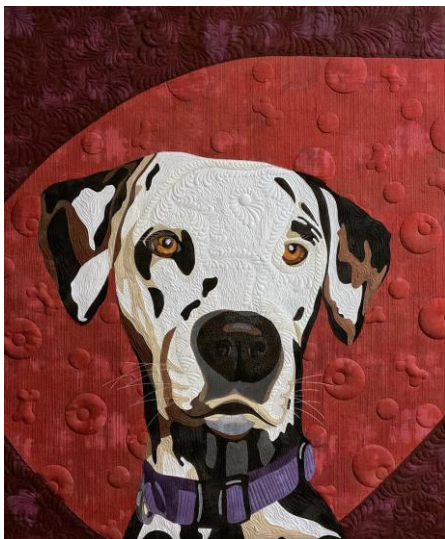
\*\*\*\*\* MEETING DATE IS CHANGED TO 2<sup>ND</sup> THURSDAY OF EACH MONTH \*\*\*\*\*

JUNE 2024

# Treasurer's Report

<b>Beginning Balance 4/20/2024</b>		<b>\$2890.58</b>
Income		
	\$0.00	
	<u>\$0.00</u>	
<i>Total Income</i>		\$0.00
		<i>Subtotal</i> \$2,890.58
Expenses		
Check #619, Void	\$0.00	
Check #620, Antiques and Uniques	\$120.00	
Check #621, Wind's Edge, Inv #11601 \$231.01 for batting/quilting raffle quilt, Inv #11605	<u>\$649.01</u>	
\$368.00 for 4 rolls of batting for Sunshine Quilts, plus \$50 gas reimbursement		
<i>Total Expenses</i>		\$769.01
<b>Ending Balance 5/20/2024</b>		<b>\$2,121.57</b>

Respectfully submitted,  
Cheryl Leach, Treasurer



### VERMONT QUILTER FEATURED AT THE JUNE MEETING

Linda Diak, a quilter from Chester, will be doing a virtual trunk show for the guild on Thursday, June 13<sup>th</sup>. You can see more of her amazing work [here](#).

### FUTURE PROGRAMS

As previously discussed, the monthly program will rotate between members. If you have a demonstration or program you might like to share, please sign up for one of the monthly meetings. As a note, signing up for a monthly program will get a member an entry into the drawing for all the prizes the 35<sup>th</sup> Birthday Committee (Joyce Emerson, Jane Langdell, and Robin Wheel) is soliciting for next year.

# Secretary's Report

Secretary's Report  
May 9, 2024

**Greeting:** by President Cheryl Leach at 6:30 pm.

**# Present:** 31 in attendance

**Guests:** There were 4 guests; 2 were sisters of members from the state of Washington. The other 2 were Gail O'Brien and Pat Schweidenback.

**Secretary's Report:** Moved to accept by Sharon Perry, second by Carol Moulton. Motion passed.

**Treasurer's Report:** Moved to accept by Sharon Perry, second by Sheila Cross. Motion passed.

**Sunshine Cards:** Hilda Tallman reported no sunshine cards were sent this past month.

**Block of the Month:** May winner was Sheila Cross. **New Block:** Pattern is Clay's Choice; use soft colors. Patterns distributed or link available in newsletter.

**Sunshine Quilts:** Andrea, speaking for Marion Seasholtz, has kits available, both "Disappearing 9-Patch" and "Jelly Roll Race." Andrea reviewed the program for the new members.

**Membership:** Jan Kuhn reminded us that a new membership list was sent out via email; a few copies were distributed at the meeting.

**Old Business:** In March 2023 the guild approved Marion Seasholtz's request to purchase 3 rolls of batting. She recently purchased 4 rolls instead of 3 for \$368 from N.E. Quilt Supply. Sharon Perry made a motion that we reimburse her the full amount. Joyce Emerson seconded. Motion carried. Marion traveled there because shipping is very expensive. She asked if the guild would vote to send her \$50.00 to defray the cost of gasoline. Sharon Perry moved to do so and Nancy Donovan seconded. Motion carried.

## New Business:

- Raffle tickets for the quilt to raise money for CTQG: The consensus was to purchase 3000 tickets with no drawing date and no stapling. One ticket will sell for \$2.00, three tickets for \$5.00. The cost of the tickets will be \$104.95. The quilt will be displayed at the Craftsbury Antiques and Uniques event this summer and can be displayed at other events. Sharon Witbeck volunteered to oversee the distribution of the tickets and to receive the stubs and keep track of the money. Marion Seasholtz quilted the quilt and she will take a photo of it.
- Possible program: Andrea spoke about Linda Diak from Chester who is willing to do a virtual trunk show of her art quilts for \$150. She will speak for about 30 minutes and then take questions for about 30 minutes. Sharon Witbeck moved to engage Linda to join us on June 13. Sharon Perry seconded the motion. Motion carried. Linda is at [lindadiakquilts.com](http://lindadiakquilts.com).
- Sharon Perry let us know that there is a display of Barn Quilts at Billings Farm & Museum in Woodstock as well a quilt show there in June.

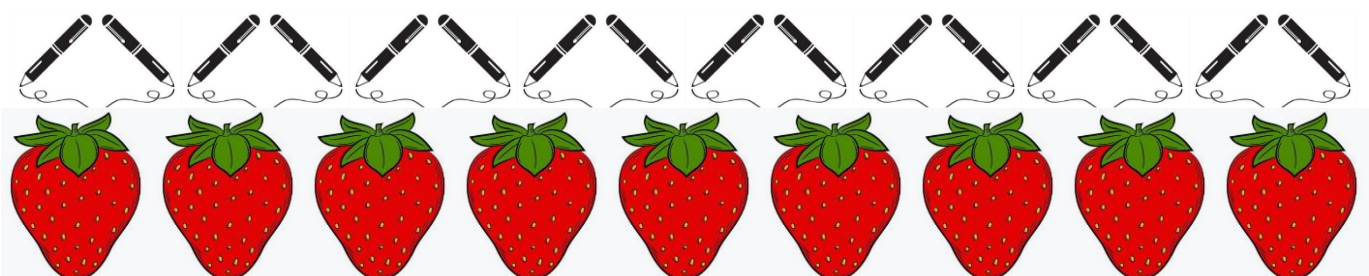
**Drawing for celebrating the 35th Birthday of CTQG:** Winners – Sheila Cross and Linda McGraw.

**Program:** Word scramble – winners – Sharon Perry, JoAnn Tallman and Jan Kuhn. **Name that Quilter:** The mystery quilter was Robin Wright. Andrea Blaisdell guessed correctly.

**Sew and Tell:** Fifteen people shared their quilts and handiwork.

**Meeting Adjourned:** 7:45 pm.

Respectfully Submitted,  
Grace Sweet, Co-Secretary



### SUNSHINE CARDS FOR OUR MEMBERS

If you know of a guild member who is in need of encouragement or comfort due to an illness, bereavement, etc., please contact Hilda Tallman, 802-888-3808. She will send out an appropriate card.

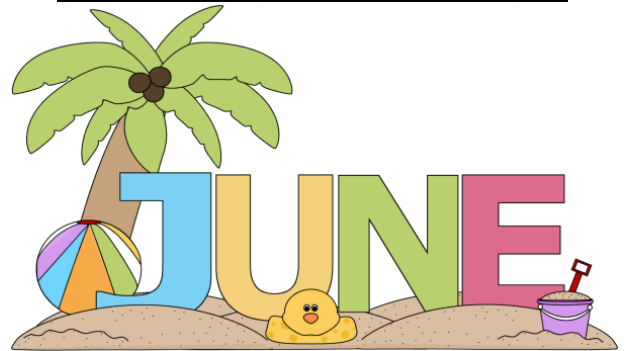
### SUPPORTING THE LOCAL COMMUNITY

Guild members are asked to bring nonperishable food shelf donations to Sterling View, the host site of our meetings. Sterling View distributes those donations to the local food shelf. Please drop your items in the basket near the door.



### JUNE IS SUCH A BONNY TIME by Annette Wynne

June is such a bonny time—  
Bird and flower weather—  
Time for song and love and rime—  
Time to be together;  
Time for hoops and sails and wings,  
Butterflies and happy things.



Jane	Paine	June	12
Bonnie	Griswold	June	14
Marion	Seasholtz	June	21

*...and many more!!!*

**FEATURED VIDEO TUTORIAL FOR JUNE:**  
<https://www.youtube.com/watch?v=qI19mLumf1o>  
**Tea & Cookies for Two June Placemats**  
 Shabby Fabrics



That is **24 Finishes in 2024!**

Join in the fun and make 24 quilted projects by the end of 2024 and your name will be entered into a special drawing held in December 2024. If you'd like to participate, fill in your name and 24 projects you'd like to finish this year on the list below. This is your list...you can add to it throughout the year if need be to have 24 projects or you can remove a project, or swap out projects, etc...you just have to have **24 Finishes in 2024** AND you must show each project at one of the guild's monthly show and tell. You can show multiple projects in one month. You also don't have to show a project every month, you just have to have **24 Finishes in 2024!** You will maintain your own list, but you must let Sharon Perry know you are participating.

\* \* \* \* \* Cut along dotted line \* \* \* \* \*

**24 in 2024**

NAME: \_\_\_\_\_

1.	13.
2.	14.
3.	15.
4.	16.
5.	17.
6.	18.
7.	19.
8.	20.
9.	21.
10.	22.
11.	23.
12.	24.



## Recipe Corner

### STRAWBERRY FOOL

1 pint strawberries  
 ½ cup sugar, or to taste  
 1 cup heavy cream  
 1 teaspoon vanilla extract

Hull strawberries, then wash them and chop into ¼-inch-thick pieces. Toss with half the sugar, and wait 10 minutes, stirring occasionally, until they give up their juices.

Place half the strawberries and all the juice in a blender, and puree. Pour puree back in bowl with chopped strawberries.

Whip the cream with remaining sugar and vanilla until cream is stiff and holds peaks easily. Fold berries and cream together, and serve immediately, or refrigerate for up to two hours.

### STRAWBERRY CRISP

5 heaping cups strawberries, hulled and quartered  
 ¼ cup granulated white sugar  
 1 teaspoon vanilla extract  
 3 tablespoons cornstarch  
 1 cup all-purpose flour  
 ¾ cup old fashioned oats  
 ⅔ cup granulated white sugar  
 ⅔ cup packed brown sugar  
 ½ teaspoon salt  
 ¾ teaspoon cinnamon  
 ½ cup (1 stick) butter, melted

Preheat oven to 350 degrees. Grease a deep dish pie plate or large baking dish with butter or cooking spray and set aside.

Combine the chopped strawberries and sugar in a large bowl and mix until the strawberries fully absorb the sugar. Add in the cornstarch and vanilla extract and stir until all of the strawberries are evenly coated. Pour into the prepared baking dish.

In a separate medium size bowl, combine the flour, oats, brown sugar, granulated sugar, salt, and cinnamon. Pour in the melted butter and stir well until well coated and crumbly. Sprinkle the crumb mixture evenly over the top of the strawberries.

Bake in the preheated oven for 35-40 minutes until fruit is bubbly and topping is golden brown. Allow to cool slightly before serving. Serve warm with vanilla ice cream on top.

### STRAWBERRY CREPES

For the crepes:

4 large eggs  
 ⅓ cup butter, softened  
 ½ cup granulated sugar  
 1 cup all-purpose flour  
 1 ¼ cups milk  
 1 teaspoon vanilla extract  
 ¼ teaspoon salt

For the filling:

2 cups fresh strawberries, sliced  
 4 ounces cream cheese, room temperature  
 ¼ cup powdered sugar  
 ½ teaspoon vanilla extract  
 1 pint heavy whipping cream  
 3 tablespoons powdered sugar  
 ¼ cup extra-virgin olive oil

For the crepes: Add all ingredients to a blender and blend until smooth. Scrape down the sides of the blender if needed. Refrigerate batter for 30 minutes.

Heat a large non-stick skillet to medium heat. When skillet is hot, lightly grease it with a little butter or cooking spray.

Hold the handle of the skillet and as you pour a few tablespoons of batter in, tilt the skillet around in a circular motion to allow the batter to evenly coat the bottom of the pan, in a thin layer.

Cook for 30 - 60 seconds or until the edges of the crepe curl slightly and the bottom of the crepe is lightly golden. Flip to the other side and cook for another 30 seconds. (Adjust your heat between medium-medium high until your crepes are cooking in about 30 seconds on each side. Re-grease your pan every few crepes, as needed.)

Remove crepe to a plate. Add more crepes to the plate as you cook them, and cover the plate to keep them warm.

For the filling: In a small bowl mix blend the cream cheese, powdered sugar, and vanilla until for 2 minutes. In another mixing bowl, beat the heavy cream and 3 tablespoons powdered sugar on high speed until stiff peaks.

Spoon most of the whipped cream into the cream cheese mixture and fold in until smooth. Reserve a little bit of whipped cream for topping on the crepes, if desired. Spoon a thin layer of the filling onto a crepe. Add some fresh strawberries on top and then roll it up. Serve dusted with powdered sugar, extra strawberries and whipped cream, if desired.

# Block of the Month

## JUNE 2024



**Colors:**  
Think  
Soft!



**PATTERN: Clay's Choice**

Pattern from [www.patchworksquare.com](http://www.patchworksquare.com)

If you have any questions, call Lisa Vilord, 802-279-7292.

Click the link below for the Clay's Choice 12" finished block pattern\*

<https://www.patchworksquare.com/mf/clays-choice-quilt-block.pdf?t=1716313976>

\*Please note the pattern has instructions for 3 sizes; please make the 12" finished quilt block.



### **BIRTHDAY CELEBRATION: DRAWINGS AND ENTRIES**

Last month we drew two names for birthday presents, and the winners were Sheila Cross and Linda McGraw. Guild members played Word Scramble; Jan Kuhn, Sharon Perry, and JoAnn Tallman correctly guessed all the words and each received a birthday present. We also played "Guess the Quilter" with the four things about someone, Andrea Blaisdell correctly identified Robin Wright. Both received birthday presents.

Next month we will be drawing two names for presents along with "Guess the Quilter" and another fun game. If everyone can remember to bring a pen with them, it would be helpful!

One thing we thought of that would make it a bit easier is when you sign in for "just for coming" and donating to the food shelf, after the winner is drawn from that, we will dump those names into the birthday present drawing. By doing that you will only need to put your name in for:

Donating a sunshine quilt top, 1 entry  
Donating a finished sunshine quilt, 3 entries  
Bringing something for sew and tell  
Volunteering for a program, 3 entries

Working on any sewing workshop  
Volunteering for a community event  
Making a block of the month (1 entry regardless of how many you make)

Please be sure to enter your name, we will be drawing for lots of presents! Please note that you must be present to win if your name is drawn.

### **QUILT TIPS**

- Use a dry erase marker to temporarily mark the line you need to use on your acrylic ruler so you can see it better. When you are finished, wipe it off!
- Use a Q-tip dipped in alcohol or a medical prep wipe to clean off your machine needle if it has adhesive "gunk" on it.
- The next time you change your rotary blade, find your sharpie and write the date on it!
- It's easy to get mixed up with fabric placement when paper piecing. Writing fabric color, i.e. "background" or "blue", onto the paper can help ensure you place pieces correctly.

**JUNE ANAGRAMS**

This newsletter editor is always looking for new articles and features to share with guild members. This month, we're introducing a regular feature called "Anagrams." Just as a reminder, an anagram is a word, phrase, or name formed by rearranging the letters of another, such as cinema formed from iceman. All of the anagrams presented this month are quilt block names. Answers can be found at the end of this page.

maid nod	help wine	lawn lobs	earthen wave	come yon	any egos
coma is	ashoreward	also shrug	belfry tut	alien rap	pools
shy fool	stumbler	java no	ask bet	lefty brut	sour bed
was buzz	mind will	owe bit	nepal pipe	toast how	alvin



**LINK TO BARN QUILT TRAIL OF NORTHERN VERMONT**

<http://www.barnquiltsofnorthernvermont.org/>

**NEWSLETTER IDEAS WANTED:** Do you have a recipe you'd like to share with guild members? Or maybe you've found a great quilting website or blog you'd like to share. Or you've visited a quilt shop within an easy drive which had bargains or a fabric selection no quilter should miss. If so, send an email to [CommonThreadsVT@gmail.com](mailto:CommonThreadsVT@gmail.com), and the newsletter editor will do her best to include it in the next newsletter. Although welcome, your input doesn't have to be a complete article. It could be a few bullets which convey your message. The editor will fill out the article as needed.

**Deadline for articles for next newsletter:**

**Thursday, June 20<sup>th</sup>, 2024**

Please email articles to Sharon Perry, [CommonThreadsVT@gmail.com](mailto:CommonThreadsVT@gmail.com),  
or mail to PO Box 517, Montgomery Center VT 05471



*June is National Iced Tea Month*



*"June is a love song written by nature." ~ Patience Strong*

**JUNE ANAGRAMS ANSWERS**

diamond	pinwheel	snowball	weathervane	economy	nosegay
mosaic	Arrowheads	hourglass	flutterby	airplane	spool
shoofly	tumblers	navajo	basket	butterfly	rosebud
buzzsaw	windmill	bowtie	pineapple	sawtooth	Anvil