

March 2017

Message from the President

It is one day past the middle of February. The groundhog was right in predicting more winter weather, though hopefully not six weeks. And Common Threads is beginning another year of quilting together and enjoying each other's company and exchanging ideas.

I had grand ideas of making either a large or more than one smaller quilts in black and white and my color, but that fizzled. (I have lots of grand ideas that fizzle.) However, if we all bring just one project - large or small - in a paper bag, there should be plenty to look at and wonder who made them.

Anne Harmon says that the raffle quilt is quilted and I hope to pick it up in Johnson this weekend so that we can get started on the binding, finish it, and show it around to sell more tickets.

At this point there still is no venue for the quilt show, though Bishop Marshall has been eliminated. But, with high hopes that somewhere will be found, please be thinking about what you would like to do to help make it happen. It is NOT a one-man show/deal.

I have been appliquéing flowers and butterflies on a row quilt that I have been working on for a year, so spring is definitely on my mind and how long it will be before I can start counting my daffodils.

I look forward to seeing everyone again on March 2.

Sally=



Officers

President
Sally Cabell
586-2244

Vice President
Donna Hamel
888-2262

Secretary
Grace Sweet &
244-7123
Robin Wright
635-9550

Treasurer
Rita Lehouillier
888-6465

Program Chairman
Cindy Smorgans
644-5880
Martha Corey
635-7056
Sheila Cross
635-7469

Newsletter Editor
Julie Rohleder
888-3834

Sunshine Chairman
Donna Merriam
888-3691

Membership Chairman
Jan Kuhn
851-8341

Charity Quilts
Marion Seasholtz
635-2731

Common Threads
Quilt Guild
meets the first Thursday of
every month
at 6:30 PM at the
Sterling View Club House in
Hyde Park
Dues are \$15 annually

Secretary's Report

December 1, 2016

We started the evening with appetizers and desserts.

Called to order: By Donna Hamel at 6:50 pm

present: Approximately 34

Guests: None

New Members: None

Birthdays: 7 members recognized.

Drawings: Sara Sargent won "Just for coming" and Ellie Murphy for food shelf donation.

Secretary's Report: Approved

Treasurers Report: No changes from the published, approved.

Newsletter: The next newsletter will come out before the March meeting. February 15 deadline to submit information to Julie.

Sunshine Quilts: Marion not here, Martha here, can accept any quilt tops brought.

Program Committee: Reminder will come out in next newsletter about the challenge. Bring to the March meeting. Clarifying questions discussed.

Membership: Nothing new.

Old Business:

Donated scrapbooking supplies are still available.

Quilt Show: We are still in need of a chair or co-chairs for the Quilt show. If interested please get a hold of Sally in the next month or there won't be a show.

New Business:

Ellie shared information about the VT Leagues and towns is making a series for quilts with block from each town in the state. Many of the towns in Lamoille County still need to be done. If you would like to get more information contact Ellie. She will also put some information in the next newsletter.

Caroline Hitchcock shared that Teresa Douglass is looking to have a large quilt tied, more information in the next newsletter or contact Caroline if interested.

Sharon read a note from Rhonda Griswold.

Discussion around donations. No donations to community agencies were given after our last quilt show. The last time we did donations other than to the food bank or LACN was January 2014. At that time we donated \$500 total to 4 agencies.

Discussed and moved and seconded to give \$500 again to 5 agencies; Out and About, Lamoille Area Cancer Network, Clarina Howard Nichols Center, Family Center and Lamoille Hospice.

Donations today \$345. Martha moved to round it up to \$400 and split between the Morrisville and Johnson Food Shelves. Seconded and approved.

Block of the Month: The Christmas block of the month won by Sally. The December blocks won by Donna.

Carol stared 3 patterns for the winter months.

Adjourned:

Respectfully submitted: Robin Wright

Calendar

March 2nd Regular Meeting, 6:30 PM
Sterling View Clubhouse
Black & White Challenge

April 1st & 2nd Franklin County Quilt Show
St. Albans, VT

April 6th Regular Meeting, 6:30 PM
Sterling View Clubhouse

PROGRAM

Our program for March will be "Reveal Your Challenge"

I hope many of you decided to take the black and white with one other color challenge. I look forward to seeing what all you creative people have done. Please bring your item in a bag so it will not be seen until the viewing time. We will play a guessing game where you will guess who made each item. There will be a prize for the person who makes the most correct answers. We will also be asking you to vote for a "people's choice" award.

So, bag up your challenge and we'll see you in March.2

Cindy, Sheila, and Martha



Food Shelf Wish List

(Straight from the Food Shelf)

- | | |
|--------------------------|----------------------|
| Canned Spaghetti Sauce | Toothpaste |
| Canned Fruit | Toothbrushes |
| Canned Vegetables | (for children, too!) |
| Macaroni & Cheese | Soap |
| Canned Pasta | Shampoo |
| Soup | Coffee |
| Cereal | Healthy Snacks |
| Tuna | Laundry Detergent |
| Personal Items for Women | Dish Detergent |

Happy Birthday to:

<i>Sally Cabell</i>	<i>March 3rd</i>
<i>Helen Champion</i>	<i>March 4th</i>
<i>Millie Piper</i>	<i>March 17th</i>
<i>Rhonda Griswold</i>	<i>March 21st</i>
<i>Andrea Blaisdell & Donna Merriam</i>	<i>March 29th</i>

Treasurer's Report

November 13, 2016 - February 15, 2017

Cash Forward November 12, 2016				\$4,371.50
Deposits:				
12/2/16	Christmas donations	\$	365.00	
	Membership Dues	\$	15.00	
	Quilt Raffle	\$	<u>50.00</u>	
				\$ 430.00
1/10/2017	Membership Dues			<u>\$ 15.00</u>
	Total Revenue			\$4,816.50
Expenses				
12/5/16	Ck. #400	Lamoille Food Share	(X-mas donation)	\$ 200.00
"	Ck. #401	Johnson Food Shelf	" "	\$ 200.00
"	Ck. #402	Clarina Howard Nichols Center	(Donations)	\$ 100.00
"	Ck. #403	Lamoille Home Health & Hospice	"	\$ 100.00
"	Ck. #404	Lamoille Family Center	"	\$ 100.00
"	Ck. #405	Lamoille Area Cancer Network	"	\$ 100.00
"	Ck. #406	Out and About	"	\$ 100.00
12/7/16	Ck. #407	Rita Lehouillier (paper plates, cups, napkins for X-mas party)		\$ 9.79
1/10/17	Ck. #408	Wind's Edge (batting for charity quilts)		<u>\$ 65.50</u>
		Total expenditures		\$ 975.29
	Cash on Hand February 15, 2017			\$3,841.21

Rita Lehouillier



Next Meeting: March 2, 2017

Three things to remember:

- 1. Show and Tell*
- 2. Food for the Food Shelf*
- 3. Your Black & White Challenge in a paper bag*

Vermont League of Cities & Towns Quilt

VLCT launched its **Local Government Quilt Project** in 2005 to celebrate the Town Fair 2005 theme of "Cities and Towns – Working Together, Making a Difference."

To date, **seventy-five** Vermont municipalities have submitted handcrafted squares. They are: Arlington, Bakersfield, Barre (town), Belvidere, Bennington, Benson, Bethel, Bridgewater, Bridport, Brookfield, Brownington, Brunswick, Cabot, Charlotte, Colchester, Concord, Danville, Dorset, Dover, Duxbury, East Haven, Enosburg, Fairfax, Fair Haven, Fayston, Franklin, Greensboro, Guildhall, Halifax, Hardwick, Hartford, Hartland, Hubbardton, Killington, Manchester, Marlboro, Middlebury, Milton, Montgomery, Moretown, Mount Tabor, Newark, North Hero, Orange, Pawlet, Pittsfield, Pomfret, Reading, Richford, Richmond, Ripton, Roxbury, Rupert, Rutland (city), Ryegate, Sharon, Shoreham, South Burlington, Springfield, Strafford, Stratton, Thetford, Topsham, Tunbridge, Waltham, Wardsboro, Warren, Waterford, Weathersfield, West Windsor, Williamstown, Wilmington, Winhall, Woodstock, and Worcester.



The first 47 squares plus a VLCT square were bound into the first quilt, which former Governor Douglas unveiled at Town Fair 2005. A second quilt, introduced at Town Fair 2009, consists of another 12 squares; a third quilt is in progress.

Ideally, every Vermont city, town, and village will be represented on a series of Vermont Local Government Quilts. And you can help: if your town hasn't already submitted a square – i.e., a 10"×10" square with an 8"×8" design – please consider doing so. Care and feeding of the quilts still rests with erstwhile VLCT Claims Representative and continued quilter extraordinaire **Pat Boyle**, though Needle and Thread Wrangler **Jessi Hill** (jhill@vlct.org) can answer any related questions.

Quilters: If you do not see your town on the list and would like to participate, contact Pat or Jessi and get represented!

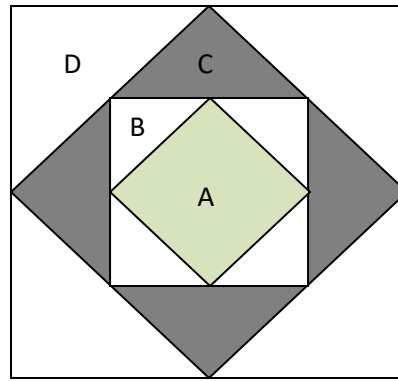
Square 1

A - Green Print- cut 1 5 1/2" square

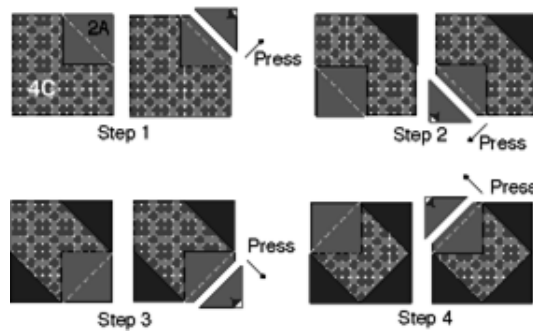
B - Cut 4 3" squares

C - Cut 2 4 3/8" squares - cut on diagonal

D - Cut 2 5 7/8" squares - cut on diagonal



1. Sew Squares B to sides of A = A/B square
2. Sew C triangles to sides of A/B square = A/B/C Square
3. Sew D triangles to A/B/C square



Squares 2 and 3

These squares can be made with any combination of colors, but include some green
Make each group of 4 in different fabric.

Cut 4 5 1/2" Squares = A

Cut 8 2 1/2" squares of contrasting color = B

1. Sew B squares opposite corners of A squares
2. Sew 4 of these squares into a square pattern or an X pattern

