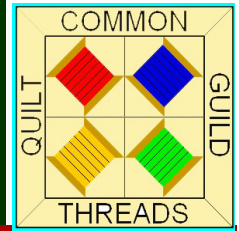


Common Threads Quilt Guild

December, 2013



From the President

As I write this the sun is shining and warming up the house, with more warmer days predicted. However, don't get too comfortable with this warm up, colder, snow filled days are coming. Let's just hope, not on our meeting days. I'm sure many of us are quilting away, as fast as we can, making holiday gifts, getting ready for some craft shows and looking forward to finishing some UFO's and PHD's and getting caught up...Will that ever happen, I think not.

On a serious note, let us all give thanks for families and friends, quilters and non quilters, alike. No matter if they are near or far, we will all be sharing Thanksgiving day in our minds and hearts. One of my favorite sayings is "We never really lose the ones we love...They live forever within our hearts".

Happy Thanksgiving.

Pat Slack, President



Secretary's Report

November 7, 2013

Call to order at 6:28pm with a moment of silence for Janet Vaupel who passed away in October.

42 people present

1 guest who may become a new member, 5 birthdays.

Drawings for Just for coming - Carol Munsie

Food Shelf - Rita Lehouillier

Secretary's report - motion to accept by Annie Morgan, seconded by Phyllis Fletcher, passed.

Treasurer's report - motion to accept by Marion Seasholtz, seconded by Annie Morgan, passed with a report update as of the Quilt Show.

Newsletter - Mary had nothing to report.

Sunshine cards sent to the Vaupel family.

Membership - 65 pd members as of tonight, if you have not paid your membership you will not receive the newsletter until you do so - s gentle reminder.

Sunshine Quilts - Marion reported that the workday was successful. A big thank you was given to Elaine Foster for setting up the work space. 11 people worked on 50 quilts. The youngest, new member, Sarah, finished 4 quilts on her own! We now have available to give out 82 quilts in the shed. From October 2011 to September 2012 we donated 94 quilts and in 2012-2013 we donated 107 quilts. As of now, we have donated 13 quilts. We received Thank You cards from Home Health and Hospice and the Clarina Howard Nichols Shelter. There are new patterns in kits - lap quilts. By the way, most of the 8 1/2 squares were cut by Annie Morgan. The new pattern is a Missouri Star. We have a need for more 8 1/2 squares for the twin and queen size quilts we will need later. A round of applause was given to Marion for all her work on the Sunshine Quilts.

Program Committee - Cindy reported they are working on new programs now the Quilt Show is over. Next month will be the potluck. If you have made a casserole carrier, please show it off. You may be asked to provide a pattern. What do we want for classes? On the weekend? They are working on a local teacher later in the year. There was a discussion on the options - a beginner class or classes, as some of the members worked on the

(continued on page 2)

PRESIDENT

Pat Slack

644.5404

VICE PRESIDENT

Andrea Blaisdell

635.8389

SECRETARY

Rhonda Griswold

888.5877

TREASURER

Rita Lehouillier

888.6465

MEMBERSHIP

Doreen Noyes

888.5095

Martha Corey

635.7056

NEWSLETTER

Mary Dick

888.4250

SUNSHINE CARDS

Lilalee Fisher

888.1908

Millie Piper

888.3433

PROGRAMS

Sheila Cross

635.7469

Hilda Tallman

888.3808

Cindy Smorgans

644.5880

CHARITY QUILTS

Marion Seasholtz

635.2731

Martha Corey

635.7056

Linda Worth

888.8926

Anita Morris

888.7981

'Ruth Wesolow

888.3309

**Guild meetings are the 1st
Thursday of the month at
Sterling View Clubhouse
at 6:30 PM**

same having many local people come to many classes from the spectrum - hand work to machine work.

Recurring Business:

Hints for the month - Cindy Smorgans shared the use of an eyebrow shaver, which she uses like a seam ripper.. One may be available at the drugstore. Her sewing hint was "if you make three sewing mistakes in one day, walk away until tomorrow". Robin Gouin was not present. Martha Duffy shared her scissors - Fiskar Whisper and if you worry about leaving on your iron - put a scrunchi on the cold iron, place on your arm when you turn the iron on and you will not forget it is on (place the scrunchi back on the turned off iron). December hints will be provided by Millie Piper, Anita Morris, and Andrea Blaisdell.

Block of the month - Sally shared that she was given 23 squares. Mary Sargent won the squares. Sally showed December's block, a star, made of two reds and any other color - green if you want a holiday theme.

PHD's - were shared and Rhonda Griswold won the drawing.

Library - Sharon reports there is a list of books on-line and as long as you call her a few days before, she can get you a book.

Cookbooks - We made \$1,760 in cookbook sales. There are still plenty to sell, there are several stores who have cookbooks to sell. Sharon Perry made a motion to make sure all cookbooks have had corrections added to them to keep our reputation. Cornelia Sweetser seconded and the vote was unanimous. Cornelia reported Debbie Wheeler, a retired teacher and new manager at the Copley Gift Shop was impressed by the items for sale at the Boutique during the Quilt Show. Debbie thought we might contribute some items to sell at the gift shop. Debbie works at the gift shop on Friday afternoons if you want to talk to her or bring in items. It was discussed that we might provide some cookbooks on consignment. It was suggested that we provide some as a donation instead. We will discuss more and decide later.

Old Business -

Quilt Show - Cindy reported the committee met and it was felt the show was a success. A great thank you was given to Cindy and Andrea. Cindy asked us to give an additional thank you to Julie for all the wonderful publicity. 345 people attended the Quilt Show. The attendees reported they found out in Yankee magazine and website (Julie said we were given a great spot in the magazine), on Across the Fence TV show and in local newspapers.

The Challenge - Caroline hopes that all quilters who entered the contest enjoyed the challenge and will do so again at the next show.

Raffle Tickets - Marion reported there were record sales from Andrea, Aline Sweet, Mary Sargent, Flo Verge. Andrea sold the most tickets and was given a gift certificate. The first place winner - Sue Longchamp, second place was Carrie Love (a family connection to Marion and proof social media works), and third place was Hannah Reed. Barb Scribner sold a winning ticket and was given a gift certificate. Marion sold two of the winning tickets and was surprised with a gift certificate. Marion offered to make the next show raffle quilt.

T-Shirts - Andrea has not heard back from Wendy Livingston so the idea of tees will be discussed later.

New Business -

Potluck is in December

Committee to distribute donations volunteers will be Sharon Perry, Ginny Moody and Cornelia Sweetser. We have \$1000 to divide up. It was motioned to divide the monies up \$500 in two years, accepted by Cornelia and seconded by Millie Piper.

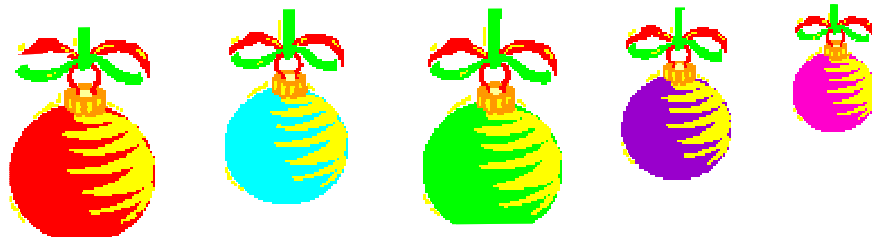
COBRAS Project - Heather Hassett contacted us about a single soldier project to provide a donation of a lap quilt for a soldier in Afghanistan. A motion was made by Sharon and seconded by Julie. Motion was carried.

A motion was made to add Barb's or Janet's names to any quilt they started and we finished. A discussion ensued and it was noted that neither lady would have liked to have their names on quilts. So the motion was rescinded.

Meeting adjourned at 7:55.

Program tonight was a make and take ornament.

Rhonda Griswold Secretary



Treasurer's Report

October 15, 2013 to November 15, 2013

Income

Cash forward October 15, 2013 \$7,306.38

Deposits

10/16/13	Deposit - Silent Auction	\$218.00
10/24/13	Deposit - Silent Auction	\$158.00
11/9/13	Deposit - Cookbooks	\$340.00
11/9/13	Deposit . membership dues \$150, \$5 donation, Silent Auction \$27, 10% of Barb O'Tooles' sales from tea cup auction \$59.	<u>\$241.00</u>

Total Income \$8,263.38

Expenses

10/23/13	Ck. Nos. 255 to 266 for sales from Boutique (12 checks)	\$768.60
"	#267 Mike O'Toole for sales from Boutique	\$657.00
10/24/13	#268 Peoples Academy (use of gym Quilt Show)	\$340.00
11/8/13	#269 Mary Dick (newsletter)	\$27.09
"	#270 Pat Slack (gift certificates for winning ticket)	\$30.00
"	#271 Wind's Edge (postage for second prize winner)	\$14.51
"	#272 Countryside Fabrics (gift certificates for winning ticket)	\$45.00

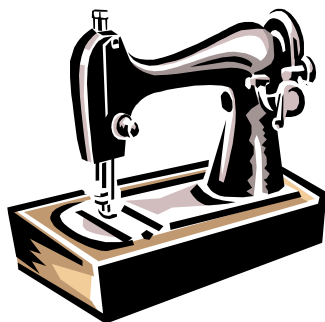
Total Expenses..... \$1882.30

Cash Balance November 15, 2013..... \$6,381.08

Rita Lehouillier Treasurer



Sewing Machine needed.



Julie has a friend, Jennifer, who would like to buy a used, but not abused sewing machine to mend clothing, etc.

If you have one call Julie at
888-3834

or email her at
rohlederj2@asme.org

Thanks



Happy Birthday!

to
Lorraine Daniels
who seems to be our
only
December Birthday
Person



**REMEMBER
TO BRING
ITEMS
FOR THE
FOOD
SHELF**

Quilt Show News

Income

Admissions	\$690.00
Boutique	\$168.40
Donations	\$6.12
Silent Auction	\$700.00
Vendors	\$185.00
Rental Racks	
Quilt Raffle	<u>\$3,012.00</u>

Total Revenues **\$4,761.52**

Expenses

Ads	\$125.00
Banners	\$70.00
Use of Gymnasium	\$340.00
Gift Certificates	\$75.00
Misc. Expense	\$40.40
Pizza	\$144.70
Raffle Tickets	\$136.56
Supplies (show cards)	\$284.78
Supplies - mums	
Supplies - Fiberboard	
Other supplies	\$49.07
Postage	\$14.61
Quilt Raffle (fabric)	<u>\$30.74</u>

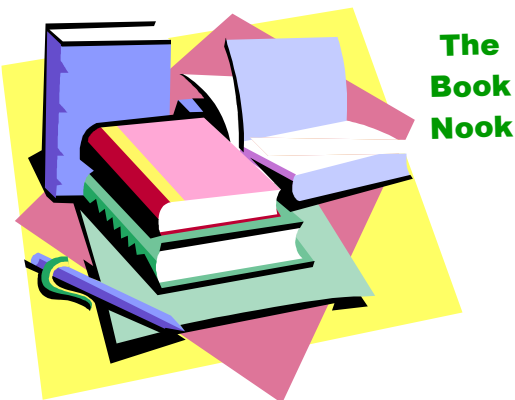
Total Expenses to Date **\$1,309.86**

Net Proceeds **\$3,451.66**

Rita

If you were on a committee, could you please hand in a report of some kind with letters and forms that you use so we could have all the information in one place. And keep copies for your own use. Thanks for the ones I have received.

Cindy



FEATURED THIS MONTH: BOOKS TO MAKE QUILTED GIFTS FOR CHRISTMAS

The guild's library holdings now stand at **351** books. The featured books this month are those for making Christmas quilts and gifts. There are **25** books in the library with a Christmas or holiday theme. Those books are: **301 Country Christmas Quilt Blocks** and **Two-Hour Quilted Christmas Projects** by Cheri Saffiotte; **A Cozy Quilted Christmas** by

Kim Schaefer; **A Laurel Burch Christmas** by Laurel Burch; **A Quilter's Country Christmas** by Leslie Linsley; **A Snowman's Family Album Quilt** by Mary M Covey; **Christmas Delights; Quilts That Celebrate the Season** by Jaynette Huff; **Christmas Quilts & Crafts** by Eleanor Burns; **Christmas Stitchery** by Jenny Chippindale and Kate Thorpe; **Christmas Traditions From the Heart, Volume Two** by Margaret Peters; **Classic Country Christmas, Holiday Collection, Holiday Stars** and **It Must Be Christmas** by Lynette Jensen; **Frosty the Snowman** by Leisure Arte; **Joy to the World** by Lynda Milligan and Nancy Smith; **Last Minute Christmas Gifts** by Carol Taylor; **Merry Christmas Quilts** by That Patchwork Place; **Old World Santas to Redwork** by Marge Wooters; **Quilted for Christmas, books I, III, IV** by That Patchwork Place; **Reindeer Frolic** by Gerry Kimmel Carr; **'Tis the Season** by Jeanne Large and Shelley Wicks; and **Yuletide Threads** by Need'l Love.

For those with internet access, you can peruse the library list in the comfort of your own home. The list can be found at <http://www.commonthreadsvt.org/ctqglibrary.html>. there are instructions on the web page to use the "find" function if you're looking for a specific book title or a specific author. Each book listing also includes a brief description of the book's contents such as wool appliqué, bags & totes, piecing, reference, etc.

If You'd like to "check out" any of the guild's library books, please contact Sharon Perry at 326.3135 or email vtquilter@gmail.com to let her know which book(s) you'd like. She'll bring them to the next guild meeting or make arrangements to get them to you.



FINISH YOUR PHD IN 2013 CHALLENGE

There's only 1 month left in the Finish Your PhD in 2013 challenge, but there's still time to finish a few more PhDs! If you signed up to participate but haven't remained current, you can still continue to participate and get a chance to win the monthly drawing or some other prizes at the December meeting. The more your name is entered, the more chances you have to win a prize.

At the November meeting, 8 guild members completed and showed 9 PhDs bringing the total PhDs completed to 114 for 2013. Of the original 15 members who signed up, 7 guild members remain eligible for the grand prize drawing in December. Keep up the good work! Rhonda Griswold won the November monthly prize.

Remember this challenge is all about finishing some of your Projects Half Done, having some fun along the way, and possibly winning some neat prizes!!!

CookBook Update

Rita has deposited

\$2,080

to date.

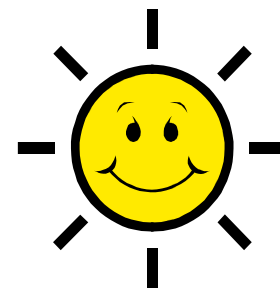
Total cost of the cookbooks is

\$1,275

Profit of

\$805

to date



There are kits available for Sunshine Quilts - when we get enough tops finished we will have another workday!

If you have any questions about the new pattern for the kits please give me a call
Marion 635-2731

Common Threads Sunshine Quilt size guidelines

Hospital birthing center
38" x 38" up to 40" x 40"

Lap quilt in all themes;
men, women, children

42" x 50"

Twin

65" - 72" wide x 90" - 100" long

Full/Queen

90" - 92" wide x 98" - 104" long

These are approximate sizes.

The size that we use the most of right now is the lap size



POTLUCK

For December we will have a pot luck. Bring in your casserole carriers to show. A carrier would make a great gift to accompany a cook book.

There will be a monetary donation basket for contributions to the Food Shelf

in lieu of exchanging gifts.



Programs

We are interested in setting up some classes. We need to know what you want. Do you or do you know of anyone that would be interested in a beginner's class? Did you like the idea of beginner classes (or demos) in a variety of methods that Carolyn and Sharon suggested? Would Saturdays be good for classes? Is there a class you could teach?

We'll have a survey sheet set out with these questions at the next meeting, but if you could take some time to think about the above questions and jot down your thoughts and hand them to one of us that would be even better,

Cindy, Sheila, and Andrea

