

October 2018

Message from the President

Hello everyone,

I cannot believe it is almost the end of September! Time flies like the geese I heard the other day and the hummingbirds are scarce and the leaves are starting to change. I love this time of year.

If you were not at the last meeting then you missed a heck of a good time playing "Quilter's Feud". A big thank you goes out to Jane Paine for doing all the work in research and development. I think it was a big hit and we should play it again!

The program for the next meeting will be Jane on deck again with a strip piecing method she learned recently. I think you will really like it!

Enjoy the beautiful fall weather,
Andrea Blaisdell



Officers

President
Andrea Blaisdell
635-8389

Vice President
Lisa Vilord
888-7239

Secretary
Grace Sweet &
244-7123
Robin Wright
635-9550

Treasurer
Lois Lemaire
253-7789

Program Chairman
By the Month

Newsletter Editor
Julie Rohleder
888-3834

Sunshine Chairman
Donna Merriam
888-3691

Membership Chairman &
Librarian
Jan Kuhn
851-8341

Charity Quilts
Marion Seasholtz
635-2731

Common Threads
Quilt Guild
meets the first Thursday of
every month
at 6:30 PM at the
Sterling View Club House in
Hyde Park
Dues are \$15 annually

Secretary's Report

September 6, 2018

Andrea Blaisdell opened the meeting at 6:30 at the Community Hall at Sterling View.

New members Mary Doonis, Denise Maya and Linda Locke were welcomed.

Drawings: Just for coming - Ellie Murphy Food Shelf - Grace Sweet

Treasurer's Report: Moved to accept - Annie Morgan, 2nd by Sharon Perry Approved.

Secretary's Report: Moved to accept - Marion Seascholtz, 2nd by Annie Morgan Approved.

Mystery Quilt: Carol Moulton passed out directions for part 2.

Sunshine Quilts: Marion Seascholtz has set two work days: Saturday, Sept. 22 and Saturday Oct. 27 in the community room at Sterling View beginning at 9:00. Bring a sewing machine and your lunch. Marion will bring a yummy dessert.

Raffle Quilt: Marion will arrange some work times during week days to work on the raffle quilt.

New Business: Andrea has had contact with Pauline Lang who gives instruction on Deb Tucker's methods of quilting. She may be able to come to our meeting in March or April and do a trunk show and perhaps a workshop or two on certain Deb Tucker patterns and use of rulers. Sharon Perry asked Andrea to ask Pauline if she has rulers that people could try before purchasing. Sharon Perry painted a barn quilt of the Common Threads Quilt Guild logo. She and Scott hung it on the Quilt shed and also the sign created by Melanie Chase which names the shed: The Barb O'Toole Shed in honor of Barbara O'Toole. The potluck meals in December and July need clean up committees. Jan Kuhn collected the annual dues of \$15.00.

Sew and Tell: Fourteen people shared. Andrea Blaisdell showed the signature quilt which was completed by several members to be raffled off by the Morrisville Historical Society.

Program: Jane Paine devised and hosted a Quilter's Feud game which was enjoyed by all - a nice change of pace. Prizes were awarded.

Calendar

September 22 nd	Sunshine / Raffle Quilt Workshop 9AM - 2PM Sterling View Clubhouse
October 4 th	Regular Meeting, 6:30PM Sterling View Clubhouse Program: Strip Piecing
October 27 th	Sunshine / Raffle Quilt Workshop 9AM - 2PM Sterling View Clubhouse

Program: Strip Piecing

Jane Paine will present a strip-piecing technique she learned recently.

Sunshine Quilts / Raffle Quilt Workshop

This will be a combination workshop. We will need machines and hand workers for both workshops....

For the raffle quilt we need 2-4 people to appliqué, and maybe a couple to tear out some bad stitching and tie knots for those doing appliqué. Blanket stitch or zig zag is fine...

We layered 45 Sunshine quilts yesterday, plus we have some already in progress....so we need machines, and there may be some tying and labels to sew on.

Workshops are at Sterling View. We start at 9 and usually sew until @2. If you bring a lunch I will bring something for dessert. We will need a few sewing machines to work on quilts in progress, and there are many that just need tying and labels.

If you have any questions please let me know: marion@windsedgestudio.com, 635-2731



Food Shelf Wish List

(Straight from the Food Shelf)

Happy Birthday to:

<i>Anne Harmon</i>	<i>October 6th</i>
<i>Lois Keith & Edna Snow</i>	<i>October 8th</i>
<i>Carolyn Babcock</i>	<i>October 9th</i>
<i>Denise Mayo</i>	<i>October 26th</i>
<i>Linda Worth</i>	<i>October 27th</i>

Canned Spaghetti Sauce	Toothpaste
Canned Fruit	Toothbrushes
Canned Vegetables	(for children, too!)
Macaroni & Cheese	Soap
Canned Pasta	Shampoo
Soup	Coffee
Cereal	Healthy Snacks
Tuna	Laundry Detergent
Personal Items for Women	Dish Detergent

Treasurer's Report

		Dues	Programs	Charity Quilts
Beginning Balance	9/1/2018	\$ 3,348.64		
Deposit	468 Winds Edge	\$ 615.00	\$ 570.00	\$ 45.00
				<u>\$ 166.42</u>
Balance 9/30/2018				\$ 3,797.22
Lois Lemaire				



Next Meeting: October 4th

Three things to remember:

- 1. Show and Tell*
- 2. Food for the Food Shelf*
- 3. Dues if you are not paid up - \$15*

Part Two

So Far? In Part One you cut the strips from the four fabrics. In Part Two you will cut these strips into squares and put the squares in baggies.

Cutting for Part 2 of Four Star Square

Get some sandwich baggies to put your cut squares into after cutting. This will make sewing easier to organize.

Fabric A: From the one 4.5" wide strip cut 4 squares, each 4.5 x 4.5 inches
From the 8 - 2.5" strips cut 128 squares each 2.5" x 2.5" (put in baggie)

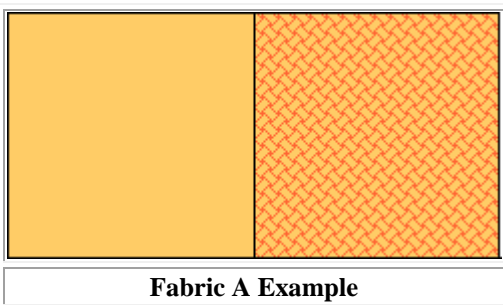
Fabric B: From the 4 - 4.5" wide strip cut 36 squares, each 4.5 x 4.5 " (put in baggie)
From the 2 - 2.5" strips cut 28 squares, each 2.5 x 2.5" (put in baggie)

Fabric C: From the 4 - 4.5" strips cut 28 squares, each 4.5 x 4.5" (put in baggie)

Fabric D: From the 4 - 4.5" strips cut 36 squares, each 4.5" x 4.5" (put in baggie)

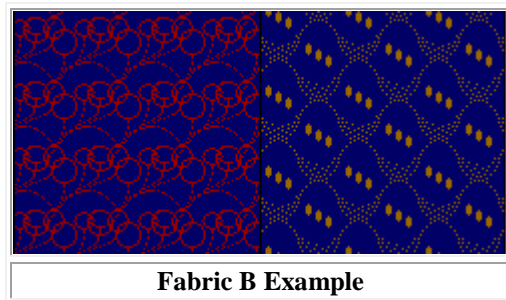
You may have used, as suggested, assorted fabrics for Fabric A and B? If so, just mix them into one baggie when you cut them.

Fabrics Review - Just to review - the 4 fabrics are shown again here: A, B, C and D from Part 1.



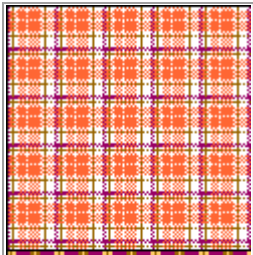
Fabric A - lightest and brightest

This fabric should stand out from the others. A yellow-gold, yellow-mustard is what I'm using in my sample. But you could use a bright yellow, lime, fuchsia - if you use a printed fabric the bright color should be prominently visible. Fabric A is a good choice for a scrappy look if you have 3-4-5 fabrics with similar coloration but different prints.



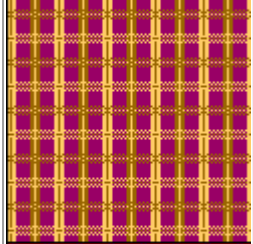
Fabric B - deepest and darkest

This fabric will be a main background and should be deep toned, it could be navy, black, purples. A swirled deep-tone batik would be nice too. Fabric B is also a good choice for scrappy look, if you want to have a scrap look, use at least 4-5 fabrics for the B section.



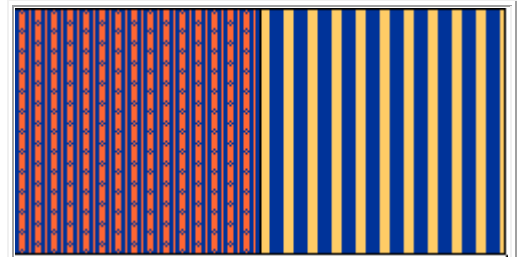
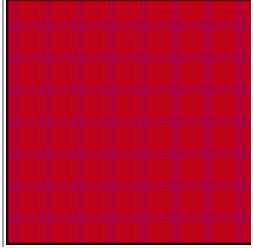
Fabric C - A plaid or multi-print

This should be a medium value color fabric. I recommend a plaid, but a medium size print with several colors in it would be OK, too. Picking up a bit of the color from Fabric A isn't a bad idea - but this fabric must be intermediate in depth of color between A and C. My choice for my sample is the middle plaid shown here with the maroon background and gold and green lines.



Fabric D - a bold stripe

This fabric should be a bold stripe which contrasts strongly with A, B, C fabrics. The stripe on the right is my choice for my sample. There needs to be a clear contrast especially between the plaid C fabric and the D stripe.



Fabric D - bold stripe

**Fabric C
plaids or print**