

June 2015

Message from the President

Dear Quilters,

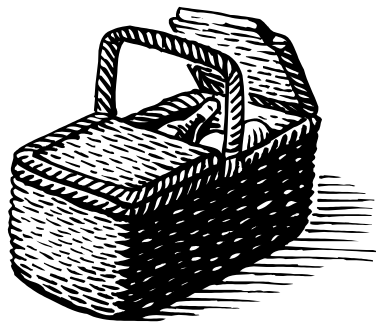
Here we are in the throes of Spring with Summer soon to be here. Lots of quilting to do to get ready for the Quilt Show. A reminder that quilt registrations brought in at the June meeting get us entered into the lottery for a wonderful prize.

As you can guess, the one major problem the guild has is that we need a candidate for President. I urge you to step up and do the job. Remember there is a really great back up team already in place for next year. Please consider taking the job for one year and go from there. Andrea and I have given our time and effort for the last 4 years and it is time for new thoughts and ideas to keep the guild active and exciting.

There is a group of us who meet every Tuesday morning from 9 to 11 for coffee and hand work and chit chat at the Charlmont. Why not join us sometime?

Keep those machines and/or fingers humming along.

Pat



Officers

President
Pat Slack
644-5404

Vice President
Andrea Blaisdell
635-8389

Secretary
Rhonda Griswold
888-5877

Treasurer
Rita Lehouillier
888-6465

Program Chairman
Andrea Blaisdell
635-8389

Newsletter Editor
Julie Rohleder
888-3834

Sunshine Chairman
Donna Merriam
888-3691

Membership Chairman
Jan Kuhn
851-8341

Charity Quilts
Marion Seasholtz
635-2731

Common Threads
Quilt Guild
meets the first Thursday
of every month
at 6:30 PM at the
Sterling View Club House
in Hyde Park
Dues are \$15 annually

Secretary's Report

May 7, 2015 Call to order at 6:35pm 33 people present. No guests, no new members, 3 birthdays
Drawings for Just for coming- Elaine Foster won but asked for another name to be drawn, Carol Moulton; Food Shelf- Sharon Perry

Secretary's report- motion to accept by Sharon, seconded by Lois Keith, passed

Treasurer's report- motion to accept by Sharon, seconded by Caroline, passed

Newsletter- remember to post by the 15th of the month Sunshine cards none sent Membership- no news

Recurring Business

Sunshine Quilts-Marion not here but Martha updated- kits are available and remember to put your name in the bag to get credit

Program Committee- Molly is presenting tonight; In June, Anne Standish will show how she makes raw edge landscape quilts from a photo. She might be willing to do a weekend workshop if there is enough interest. July will be the Pot Luck and Bingo, August will be the Tea Cup Auction.

Quilt Show Committee-

Registrations are being accepted. A packet of 3 ½ yards of reproduction fabric, provided by Sharon, will be used for a drawing for early registrations (by June meeting). You will need to provide 2 copies of the registration form and a photo (which may be emailed to Rita at ritalehouillier@comcast.net). The quilt does not have to be finished until before the show. A question of how many quilts each member will be able to enter. So far there are no limits but there may be a need to have more or less quilt entries. Those who attended the Jane Franke classes are asked to enter so there can be a display of the quilts they made. A note- miniature quilts are small. Should we have a new category for small quilts like "wool works"?

Challenge quilt- Mary says to bring them in. A number will be placed on the quilts for identification purposes. A list will be made so no quilts are lost.

As to the regular show quilts, to ensure the safety of the quilts, patience will be needed when bringing the quilts in on Friday and when they are picked up on Sunday. Peggy offered to make the quilt cards but her printer is not able to make the cards. She needs to know how to transfer the information to a printer. Call her if you can help.

Demos- Phyllis will show her kits and Sharon has volunteered to demo. The vendors will be asked if they want provide a demo. Donna and Caroline will also demo. Martha will organize the Sunshine Quilt show case.

We are still looking for donations for the Tea Cup Auction, contact Jan or Martha if you have anything. Door prizes are needed as well- it does not have to be quilt or sewing related. Make a basket of items. Sheila Cross brought some baskets to give out to those who were willing to fill it for the door prizes or Tea Cup Auction. Look in yard sales for baskets for your own donation. So far for the door prizes we have syrup from Rita. Think charm packs, a quilted item, etc.

Hints for the month- no one planned to show were at the meeting tonight

Block of the Month-19 blocks won by Lois Keith. Next month is a Rose Bud design. See the newsletter for a pattern.

Library- Sharon has 392 books available to take out with an updated list on line. Sharon pointed out she gets bargains for every book she purchases for the guild. If you see a book you would like to see in the library let her know and she will have it researched and purchased. She is planning to weed out books that she believes will never be taken out. There was a motion made by Sharon those books be donated to the Quilt Show and seconded by Julie. It was suggested to do the same with your library. Someone might be looking for a book you have.

Old Business

Craftsbury Antiques and Uniques sign-up sheet for volunteering on July 11.

Nominating committee report- Millie, Ellie, Martha and Rita have approached people and Vice President will be Donna Hamel, who asked for help in doing the job; Rita will continue to be Treasurer, Rhonda will continue to be the secretary; Membership will be Jan; Charity quilts will be handled by Marion; Donna will cover the sunshine cards; Julie will continue to set up the newsletter; and Molly will continue with the programming. We still need a volunteer to be a President.

LACiNg Up packets are available from Martha. The walk is on June 27. Do we want to set up a tent and walk?

Motion made by Mary Dick and seconded by Carol Moulton. If you have money collected, bank night is the 24th of June. The walk is the same weekend as VQF but as VQF is Friday to Sunday, you can do both.

New Business: Andrea would like to purchase a projector for the guild. We can borrow a screen but it is harder to borrow a projector that is compatible enough. A projector would allow us to expand our ability to do a presentation. Sharon made a motion to spend up to \$300 for a projector and Lois Keith seconded. Sharon's husband was volunteered to get a great deal for us. If it is needed to spend more money an email will be sent as a notice.

Martha Corey has a size large guild embroidered tee shirt which does not fit her well and she is willing to sell it for \$15 (it cost \$18).

The Green Mountain Guild meeting is May 16 at 8am. If you are interested, call Andrea for carpooling information. Dues will be \$15 if you attend and if your name begins with A-M please bring a refreshment. Bring your bag lunch. You can also bring an auction item.

FYI- Sharon Shorey has a new design, check out her website: <http://minitraditions.com/>

Submitted by Rhonda Griswold

Calendar

June 7th Regular Meeting, 6:30 PM
Sterling View Clubhouse
Ann Standish, Raw Edge
Landscape Quilts

June 27th LACiNg Up for Cancer Walk

June 26th - 28th Vermont Quilt Festival
Champlain Valley Expo, Essex Jct.

July 2nd Potluck Dinner Meeting, 6:30 PM
Sterling View Clubhouse
Bingo - bring your "cards"

SLATE OF OFFICERS FOR 2015-16

President: NEED A VOLUNTEER

Vice President: Donna Hamel

Secretary: Rhonda Griswold

Treasurer: Rita Lehouillier

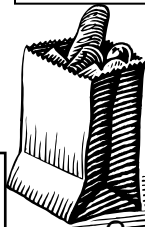
Programs: Molly Carmody

Membership: Jan Kuhn

Newsletter: Julie Rohleder

Sunshine Quilts: Marian Seasholtz

Sunshine: Donna Merriam



Happy Birthday to:

<i>Rhoda Reed & Kathleen Manning</i>	<i>June 11</i>
<i>Marion Seasholtz</i>	<i>June 21</i>
<i>Shirley Duso</i>	<i>June 23</i>
<i>Joyce LaRow</i>	<i>June 25</i>
<i>Rita Lehouillier</i>	<i>June 27</i>
<i>Ellie Murphy</i>	<i>June 29</i>

Food Shelf Wish List

(Straight from the Food Shelf)

Canned Spaghetti Sauce	Toothpaste
Canned Fruit	Toothbrushes
Canned Vegetables	(for children, too!)
Macaroni & Cheese	Soap
Canned Pasta	Shampoo
Soup	Coffee
Cereal	Healthy Snacks
Tuna	Laundry Detergent
Personal Items for Women	Dish Detergent

Treasurer's Report

April 15, 2015 - May 14, 2015

Cash forward April 15, 2015			\$3,116.39
Deposits:			
4/20/2015	Cookbooks	\$ 30.00	
	Vendors - Quilt Show	\$ 40.00	
	Quilt Raffle	<u>\$ 75.00</u>	\$ 145.00
5/7/2015	Vendors - Show Vendors	\$ 80.00	
	Cookbook	<u>\$ 10.00</u>	\$ 90.00
	Total Revenue		\$3,351.39
Expenses			
	Ck. #		
4/16/15	#325	Winds' Edge (124 yds. Backing)	\$ 247.25
"	#326	Julie Rohleder (copies \$11.77; postage \$18.62)	\$ 30.39
"	#327	Sharon Perry (lib books)	<u>\$ 21.10</u>
	Total Expenses		\$ 298.74
	Cash Balance May 14, 2015		\$3,052.65

Rita Lehouillier



Next Meeting: June 4th

Five things to remember:

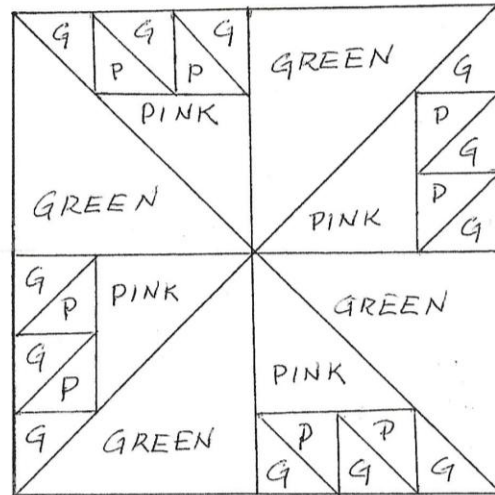
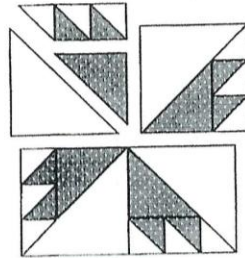
- 1. Bring your block of the month*
- 2. Bring Food for the Food Shelf*
- 3. Bring your Quilt Show Registrations (2 copies of form, one photo) to be eligible for drawing*
- 4. Carpool with a Friend!*

Ann Standish is coming next month to show us her Raw Edge Landscape Quilts. If anyone is interested in having a class with her, get in touch with Andrea or Molly ASAP. If there is enough interest, a class can be scheduled.

Check out Ann's work at <http://annestandish.com/>

To follow in my we-need-to-see-flowers theme this spring, the block of the month for JUNE is Rosebud. Again, slightly different from other blocks I have chosen, but easy enough to piece.

COLORS: green for the background and pinks



CUT: from green - two 5 3/8" squares cut in half diagonally;
six 2 3/8" squares cut in half diagonally

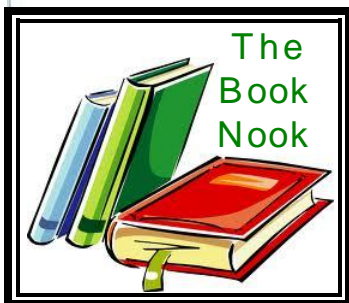
from pinks - you have options here. Use one pink for the larger triangles and another (lighter or darker) for the smaller triangles, reverse that, or use only one pink. Cut two 3 7/8" squares cut in half diagonally; six 2 3/8" squares cut in half diagonally.

SEW: Using smaller green triangles and small pink triangles, make 8 half square triangles. Press to the green. Sew 2 of these together 4 times, green to pink. Press seam open. Add small ^{green} triangle to the pink end of this 4 times. Press to the green.

Sew this strip to a straight side of the larger pink triangle four times. Press to the larger pink triangle, the way it wants to go. Sew this pieced triangle to the large green triangle 4 times. Press to the green. It should measure 5 inches and hopefully all 4 squares are the same.

Lay them out in a square with the rosebud points facing out. Sew two together twice, pressing to the green. Sew these two sections together matching the centers. Press as you wish.

Now you will have a rose bouquet which will make in to a delightful wedding, anniversary, or even baby quilt. Roses never go out of style.



TWO NEW BOOKS ADDED

With the recent acquisition of 2 books, the guild's library totals 392 books. Creative Quilt Collection, Volume Three, published by That Patchwork Place, and Patchwork Party, by Sandy Bonsib, are the latest additions. There are 19 projects, from traditional to modern, in the Creative Quilt Collection. Patchwork Party is described as a "visually yummy quilting book" by a reader on Amazon. The book not only features 11 quilt projects, but it includes the dessert recipes which inspired the quilts.

If you'd like to "check out" any library books, please contact Sharon at 326-3135 or email vtquilter@gmail.com to let her know which book(s) you'd like. She'll bring them to the next guild meeting or make arrangements to get them to you.

For those with internet access, you can peruse the library list in the comfort of your own home. The list for the CTQG library is at <http://www.commonthreadsvt.org/ctqglibrary.html>. If you have any suggestions for additions to the library, please let Sharon Perry know.

Quilt Show Update

Registrations are starting to come in. If you want to be in the drawing for early registering, have yours in by the next meeting.

Martha and Jan have volunteered to chair the teacup auction. I was pleased to see that so many of you are planning on donating something to that. Please get your things to Martha and Jan, or at least let them know what you will be bringing so they can do their planning before the show.

We could still use more door prizes. What do you have you could donate?

We have a couple people lined up for demos. What can you do?

If you finished a quilt from the Jane Franke class, please plan to register it.

Remember our new category of Wool Works.

Hope you are working on a challenge quilt and projects for the boutique table.

Start to think of how you can help at the show and what times will be best for you. We will need people for white glove, raffle table, admissions table.

The next quilt meeting will be after the June meeting. I will be around for the first couple weeks in June. Let me hear from you as to when is a good night for you. I will try to be at the June meeting early and try to catch up with many of you then.

Cindy

STILL TIME TO ENTER SPECIAL DRAWING FOR EARLY QUILT SHOW REGISTRATIONS

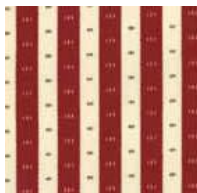
As discussed at previous guild meetings, there will be a special drawing for all members who provide the required photo and two copies of the registration form for their quilt entries by the guild meeting on Thursday, June 4th. A member's name will be entered into the drawing once for every quilt registered. The winner will be drawn at the June meeting.

As a note, your quilt does **not** have to be finished when you submit your registration form as long as you are confident you can complete the quilt prior to the quilt show in October. Here's a link to find the registration form: <http://www.commonthreadsvt.org/ctggquiltshow.html>.

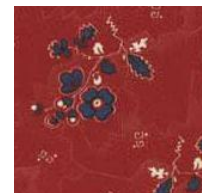
The drawing prize is a beautiful bundle of 3½ yards of reproduction fabric (five ½-yard cuts and one 1-yard cut) of Moda's Collections—Warmth. This fabric line is part of the Collection for a Cause effort by Moda. Proceeds for the sale of this line support Habitat for Humanity. Pictures of the fabrics and cut sizes are shown below.



½ yard



1 yard



½ yard



½ yard



½ yard



½ yard