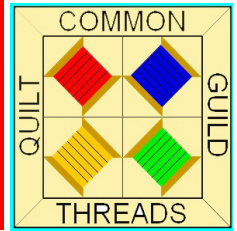


# Common Threads Quilt Guild

## June 2013



### From the President

Hello Ladies,

The weather sure has been perfect lately! I just love springtime with all the flowering trees and flowers. I was going through some pictures the other day and came across some photos of the quilts that I helped make in Waterville years ago. One of them was Vermont Wildflowers. It had 20 blocks of appliquéd flowers such as trillium, lady's slipper, violet, water lily, blue flag iris and many others. It was really beautiful and it reminded me of the fun and companionship with that group of ladies. The group contained beginner and advanced quilters, much like the guild members we have. That, to me is what quilting is all about!

Take care and keep quilting no matter what your skill level..

*Andrea Blaisdell*

### Treasurer's Report

April 13, 2013 - May 11, 2013

#### Income

Cash Forward 4/13/13	\$1,752.60
Deposits	
5/4/13 Quilt Raffle	\$130.00
Membership	\$10.00
Vendors	\$40.00
Sale of Pins	<u>\$15.00</u>
<b>Total Income</b>	<b>\$1,947.60</b>

#### Expenses

4/17/13 Ck #233 Vt. Quilt Festival (Ad for quilt show)	\$125.00
4/17/13 Ck #234 Acadia Insurance Co. (liability Ins.)	\$127.00
5/2/13 Ck #235 Mary Dick (postage newsletter \$46.00, Copies \$39.38, Printer ribbon \$49.07)	\$134.45
5/29/13 Ck #236 Out and About (Memoriam L. Heath, :Lois Lemire's mom)	<u>\$25.00</u>
<b>Total Expenses</b>	<b>\$411.45</b>

Cash Balance May 11, 2013

\$1,536.15

*Rita Lehouillier* Treasurer



#### PRESIDENT

Andrea Blaisdell  
635.8389

#### VICE PRESIDENT

Pat Slack  
644.5404

#### SECRETARY

Kathleen Sampson  
472.5707

Rhonda Griswold  
888.5877

#### TREASURER

Rita Lehouillier  
888.6465

#### MEMBERSHIP

Doreen Noyes  
888.5095

Martha Corey  
635.7056

#### NEWSLETTER

Mary Dick  
888.4250

#### SUNSHINE CARDS

Lilalee Fisher  
888.1908

Millie Piper  
888.3433

#### PROGRAMS

Sheila Cross  
635.7469

Hilda Tallman  
888.3808

Cindy Smorgans  
644.5880

#### CHARITY QUILTS

Marion Seasholtz  
635.2731

Martha Corey  
635.7056

Linda Worth  
888.8926

Anita Morris  
888.7981

Ruth Wesolow  
888.3309

Guild meetings are the 1st  
Thursday of the month at  
Sterling View Clubhouse  
at 6:30 PM

## Secretary's Report



May 2, 2013

The common Threads Quilt Guild met at Sterling View with 45 members and 1 new member present. There were several May birthdays.

Kathleen Sampson won the prize "Just for Coming" and Sheila Cross won for food Shelf Contribution.

A motion was made by Annie Morgan and seconded by Millie Piper to accept the Secretary's report. So moved. A motion was made by Annie Morgan and seconded by Ginny Moody to accept the Treasurer's report. So moved.

No Sunshine cards were sent out in April.

The Membership Committee reported that we now have 71 members and 1 new member has joined the Common Threads Quilt Guild.

### Charity Quilts:

There will be a drawing and prizes will be given out for helping with charity quilts in June. Three bed size quilts were given to fire victims.

### Old Business:

The By Laws were voted on and passed by voice vote.

### Quilt Show:

The rest of the raffle tickets for the 2013 Quilt Show were passed out.

Registration forms for quilts for the October Quilt Show will be coming in June. They must be filled out and returned by August 1.

We will have a demo table at the Quilt Show.

A suggestion was made to sell used books and magazines at the show.

### PHD challenge:

Ten members showed their work. Sharon Perry was not present so the prize drawing for April will be next month.

### New Business:

The Nominating Committee announced a full slate of candidates for next year's positions.

### Cancer Walk:

The Common Thread Quilt Guild will participate in the June 22 walk. Carol Godin and Rita Lehouillier will set up. Time for walk: 11AM - 11PM.

### Program:

Favorite quilt gifts were shared by many members.

Meeting was adjourned at \*;30 P.M.

*Kathleen Sampson*



## Quilt Show News

Thank you so much for all that signed up last month for various jobs at the show. With this kind of interest, we should have a great show.

Look for the registration form and think of the quilts you can enter. I know from show and tell and the UFO challenge that there are many gorgeous quilts for us to hang at our show. Please have the registration forms in by August 1. Robin will need that much time ahead to plan the layout. You can enter more than one quilt and it does not have to be finished at the time of entering.

I would like some volunteers for doing a demonstration at the show. What would you like to show others how to do?

The next show meeting will be May 29th at the Town Hall in Johnson at 6:30. Anyone is welcomed.

Come with ideas.

The next issue that I would like to talk about is copyrights. If you have any specific information, please be ready to pass it on. My sister's guild used someone's design and ended up paying a \$2000 fine. Let's make sure that won't happen to us or anyone selling at the boutique table.

*Cindy and Andrea*

# HAPPY BIRTHDAY!

## June Babies!!!



Kathleen Manning	11th
Rhoda Reed	11th
Marion Seasholtz	21st
Joyce LaRow	25th
Rita Lehouillier	27th
Ellie Murphy	29th

## Common Threads Quilt Size Guidelines

Hospital birthing center: 38" x 38" up to 40" x 40"

Lap quilt: in all themes, men, women, children 42" X 50"

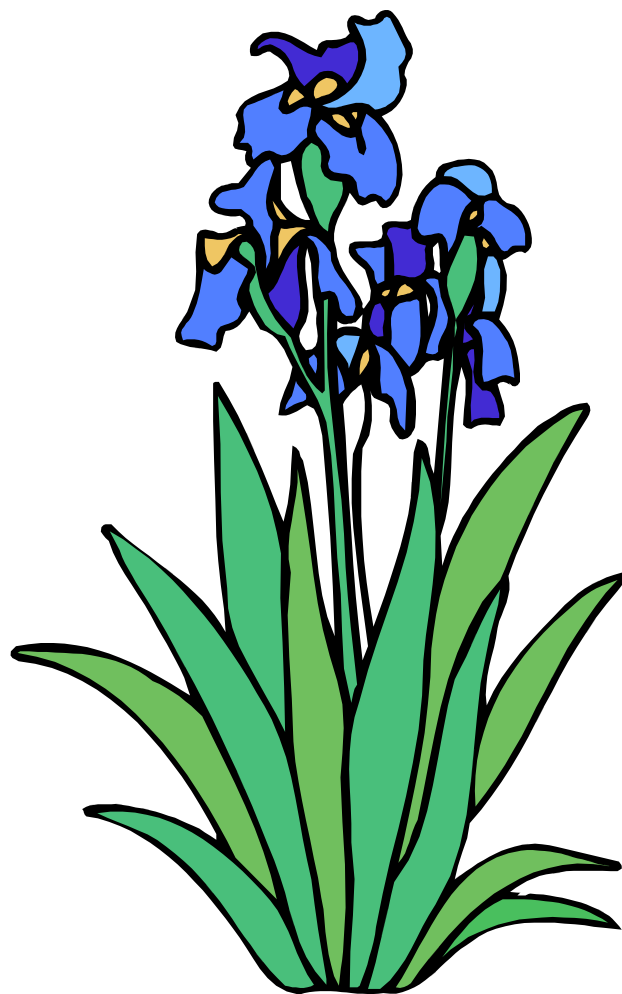
Twin: 65" - 72" wide x 90" - 100" long

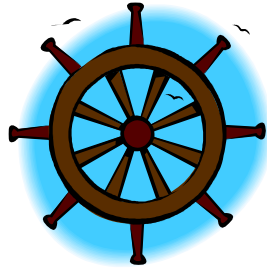
Full/Queen 90" - 92" wide x 90" - 104" long

These are approximate sizes.

We are trying to keep some of the two larger sizes on hand.

The size that we use the most of right now is the lap size.





# QUILT SHOW CHALLENGE

## STARS AT SEA



Please bring your sold ticket stubs and \$ to the next meeting.

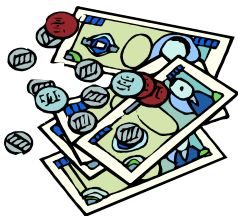
There are many more available to sell!

Contact Marion at 645-2731 or

marion@windsedgestudio.com

if you need more tickets.

There will be tickets available at the meeting.



This years Challenge - to commemorate the 101st anniversary of the sinking of the Titanic on a cold, clear, star-studded April night in 1912 - has a marine and/or nautical theme.

The Requirements are the following:

1, The piece shall be between 10 and 20 inches square, rectangular, (or round, Sally!).

2, It shall have a marine and/or nautical theme: This includes everything beneath the sea to what rises upon the sea and anything related.

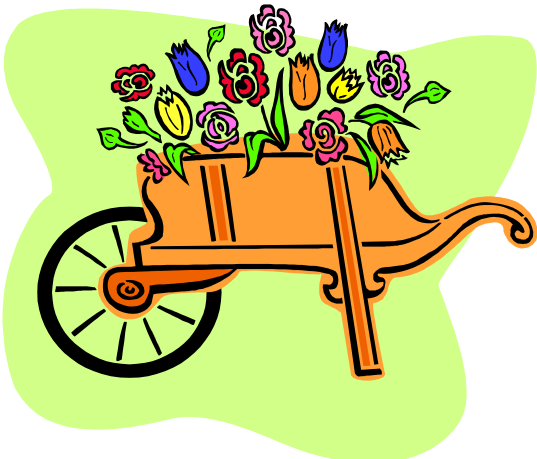
3, A star or stars must appear some place in the piece, even if just in one of the fabrics.

4, And a negative requirement: no pieced sailboats!

If you have any questions, please call me at 326-4013

I wish you all "a calm sea and prosperous voyage!"

*Carolyn Babcock*



**REMEMBER  
TO BRING  
ITEMS  
FOR THE  
FOOD  
SHELF**

## Program for next meeting

We will have a demonstration of the leaf bowl by Ellie and the cloth basket by Sheila at the June 6th meeting. These were shown as gift ideas last month and there has been interest from many in making them.

Looking ahead: In July we would like to have a "Bring a Bag" night. There is interest from many in making bags and we'd like to give them a variety of ideas. With enough interest we would like to have a Saturday class at the Johnson Town Hall. Would any of you like to be an instructor? August will be our potluck.

*Cindy, Sheila and Hilda*



Come see us at  
**Vermont Open Studio Weekend**  
Saturday and Sunday May 25 & 26  
10 AM to 5 PM  
Marion and Matt Seasholtz  
Wind's Edge Studio and  
Seasholtz Glass Design  
590 East Main Street  
Hyde Park, VT 05656  
*Look for the flags*  
Office # (in Johnson) 635.2731  
Studio (in Hyde Park) 888.4111  
Glass blowing demonstrations  
*I will also be selling some fabric....*

*10% off if you bring this ad.*

**NEXT  
MEETING  
JUNE 6  
AT  
6:30 PM**

**SUMMER**

