

# April 2019

## Message from the President

Hello Everyone,

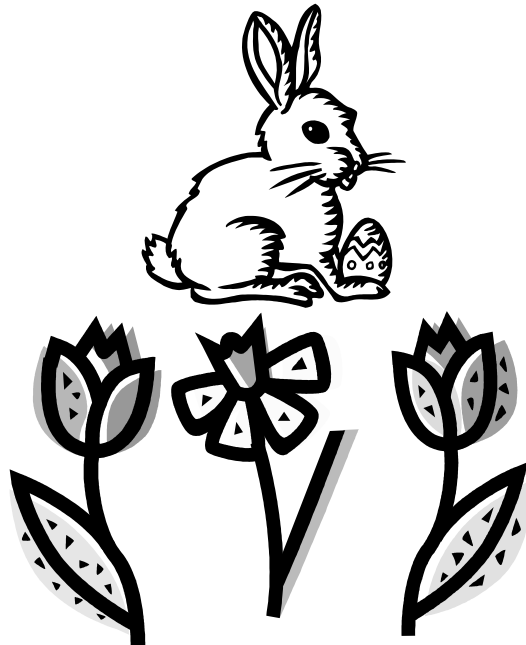
Well my gosh I think spring is going to arrive after all. I love that the chickadees are starting to sing their mating song early in the morning.

It was so great to see all the mystery quilts in all the different color combinations. Thank you to Carol Moulton for taking that on. We had a fantastic sew and tell with some beautiful pieces! Thank you goes out to Jan Kuhn for demonstrating her fabric berry basket. I am going to attempt one and anyone else that does, bring it to sew and tell next month.

The April meeting will begin with a Trunk show by Pauline Lang from Essex, Vt. She will be showing her Deb Tucker quilts and explaining the various rulers used. We will have the business portion of our meeting after.

Finally, for everyone who is taking the Rangeley Runner class, it will be held at the Johnson Town Hall instead of the community center. The Town Hall will be open at 8:00 am for set up.

Happy Spring,  
Andrea Blaisdell



## Officers

President

Andrea Blaisdell

635-8389

Vice President

Lisa Vilord

888-7239

Secretary

Grace Sweet &

244-7123

Robin Wright

635-9550

Treasurer

Lois Lemaire

253-7789

Program Chairman

By the Month

Newsletter Editor

Julie Rohleder

888-3834

Sunshine Chairman

Donna Merriam

888-3691

Membership Chairman &  
Librarian

Jan Kuhn

851-8341

Charity Quilts

Marion Seasholtz

635-2731

Common Threads  
Quilt Guild

meets the first Thursday of  
every month

at 6:30 PM at the

Sterling View Club House in  
Hyde Park

Dues are \$15 annually

# Secretary's Report

March 7, 2019

Thirty-two members were present including Robin Wheel who just joined.

The meeting was called to order by president, Andrea Blaisdell.

Lois Lemaire won the drawing Just for Coming. Julie Rohleder won for bringing food for the food shelf.

The **minutes** for the January meeting were accepted. There was no meeting in February because of inclement weather.

The **Treasurer's report** was accepted. The group now has a tax-exempt number for being a non-profit.

A **thank you note** was received from the Lamoille County Food Share and from Ann H. Wilson who received a sunshine quilt. Two thank-you notes, also, from Linda Jones from the Manor.

The completed **mystery quilts** were shared by nearly half of the group. Carol Moulton had provided the directions over several months.

**Sunshine Quilts** - Marion Seasholtz A prize was awarded to Martha Corey for making 83 quilts. Barb Scribner and Grace Sweet also received prizes for contributing.

**Raffle Quilt:** Jan Kuhn will manage the tickets. There will be two workshops to work on sunshine quilts and the raffle quilt (machine appliqué on flowers, stems and leaves) on Sat., March 30 and Sat., April 27 beginning at 9 a.m. Bring a lunch, Marion will bring dessert. Machines will be needed. Let Marion know if you plan to come.

**New Business:** The Antiques and Uniques event will be held in Craftsbury Common on July 13 from 10-4. The booth fee is \$50.00. Cheryl Leach made the motion that we attend the event to sell tickets for the raffle quilt. Julie Rohleder seconded. Passed. Andrea Blaisdell will send in the application and the fee. We have a tent to set up - will need a table and two chairs as well as people to man the booth.

Fourteen people shared their completed items. Remarkable creativity.

## April Program

Pauline Lang will attend our next meeting on April 4. She will give a lecture. She will hold a workshop on Sat., April 6 from 9 to 3 with a noontime potluck. The workshop will be to make a Rangely Runner. The \$30 fee will include a Deb Tucker pattern. A person can buy a Tucker Trimmer for \$18. Bring your own fabric. Contact [lang57@mail.com](mailto:lang57@mail.com) with questions.

Jan Kuhn gave a demonstration of how to make fabric berry baskets.

The group watched half of a video by Ricky Timms on how to make a Kaleidoscope quilt by first making a pattern.

# Calendar

March 30	Sunshine & Raffle Quilt Workshop Sterling View 9 AM - 3 PM
April 4 <sup>th</sup>	Regular Meeting, 6: 30 PM Pauline Lang Trunk Show
April 6 <sup>th</sup>	Table-runner Class with Pauline <b>Johnson Town Hall</b> , 9 AM
April 6 <sup>th</sup> - 7 <sup>th</sup>	Franklin County Quilt Guild Show St. Albans City Hall
April 27 <sup>th</sup>	Sunshine & Raffle Quilt Workshop Sterling View 9 AM - 3 PM

# Sunshine & Raffle Quilt Workshops

We have 2 workshop s scheduled for Sunshine Quilts and the Raffle Quilt. We will need machines for both. The workshops are Saturday March 30 9am-2pm and Saturday April 27 9am-2pm.

If you bring your lunch I will bring something for desert.

This is a dual workshop - we will be doing the usual work on the Sunshine Quilts. If you haven't ever come to work on them please don't hesitate, I would be happy to explain our process to anyone that wants to help.

For the raffle quilt - we can have 2-4 people machine appliquéing at once. You can use either a blanket stitch or a zigzag. I would be happy to help you adjust your machine stitch so we have a uniform size.

For March the following people volunteered at the last meeting: Lisa, Hilda and Robin W.

For April the following people volunteered at the last meeting: Anita, (Martha and Denise maybe)

We could use one more person at each of these if anyone is interested. The reason participation is limited is thread availability. It is also helpful if someone wants to tie off the ends.

If you volunteered to come help and something comes up please let me know.

If anyone has any questions please call or email. Marion 635-2731 [marion@windsedgestudio.com](mailto:marion@windsedgestudio.com)



## Food Shelf Wish List

(Straight from the Food Shelf)

Canned Spaghetti Sauce	Toothpaste
Canned Fruit	Toothbrushes
Canned Vegetables	(for children, too!)
Macaroni & Cheese	Soap
Canned Pasta	Shampoo
Soup	Coffee
Cereal	Healthy Snacks
Tuna	Laundry Detergent
Personal Items for Women	Dish Detergent



## Happy Birthday to:

Annie Morgan  
Tracey Morin

April 10<sup>th</sup>  
April 18<sup>th</sup>

## Pauline Lang Trunk Show & Workshop

Pauline Lang is a certified Deb Tucker instructor and will be doing a trunk show at the April meeting. There will be a workshop for the Rangely table runner on Saturday, April 6<sup>th</sup>, at the Johnson Town Hall. (Revised location) Lunch will be a potluck for anyone who wishes to come. If you wish to sign up for the class, contact Andrea IMMEDIATELY 635-8389.

# Treasurer's Report

No Report



*Next Meeting: April 4<sup>th</sup>*

*Two things to remember:*

*1. Show and Tell*

*2. Food for the Food Shelf*

# Fabric Berry Basket

A tutorial from <https://noodle-head.com/2013/08/fabric-berry-basket-diy-tutorial.html>

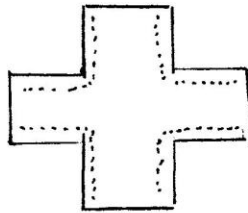
By Anna Graham

## Materials:

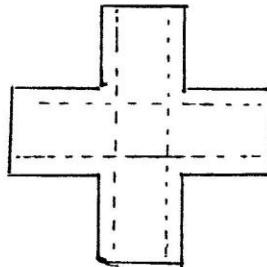
- 2 pieces of fabric that will accommodate pattern
- ½" double-fold bias tape (homemade or purchased)
- ½ yd double-sided fusible heavyweight interfacing (she uses Pellon 72F)

## Steps:

1. Cut pattern from exterior fabric, lining fabric and interfacing  
(to use small interfacing pieces can cut for small basket 1- 4 ¼" sq. and 4- 4" x 2" rec. and for large basket 1- 5 ½" sq and 4- 4 ¾" x 3 ½" rec.)
2. Cut interfacing piece into five parts = middle square and 4 side rectangles
3. Place the 2 fabric pieces together, right-sides facing. Sew on dotted lines below



4. Fuse interfacing square to middle of exterior fabric
5. Clip 4 inner corners and turn the piece right-side-out. Press
6. Slip 4 interfacing rectangles into sides. Press both sides.
7. Topstitch as shown below:



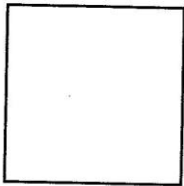
8. Stitch the binding to the top edges, leaving about a ½" gap between sides. Flip binding tape over raw edges and topstitch in place. (I didn't leave gap)

# noodlehead

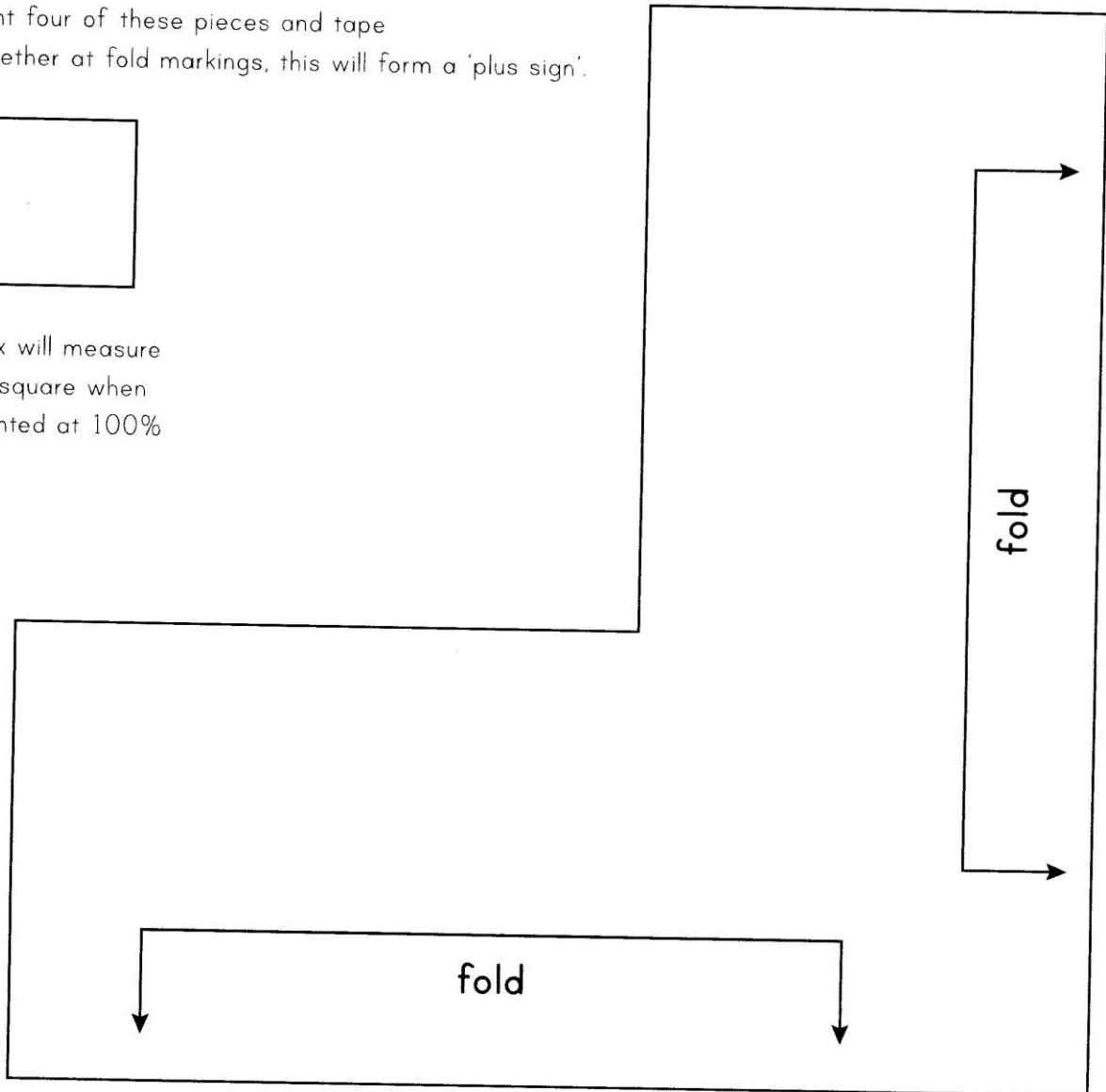
## Berry Basket Pattern - Large

Fold fabric in quarters, align fold markings of pattern piece with folded edges of fabric.

Cut 2 on fold, one lining, one exterior. You can also print four of these pieces and tape together at fold markings, this will form a 'plus sign'.



Box will measure  
1" square when  
printed at 100%



From double sided fusible interfacing:

Cut one piece 4.75" W x 4.75" T (will be bottom of basket)

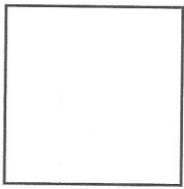
Cut four pieces 4.75"W x 3.75" T (will be sides of basket)

# needlehead

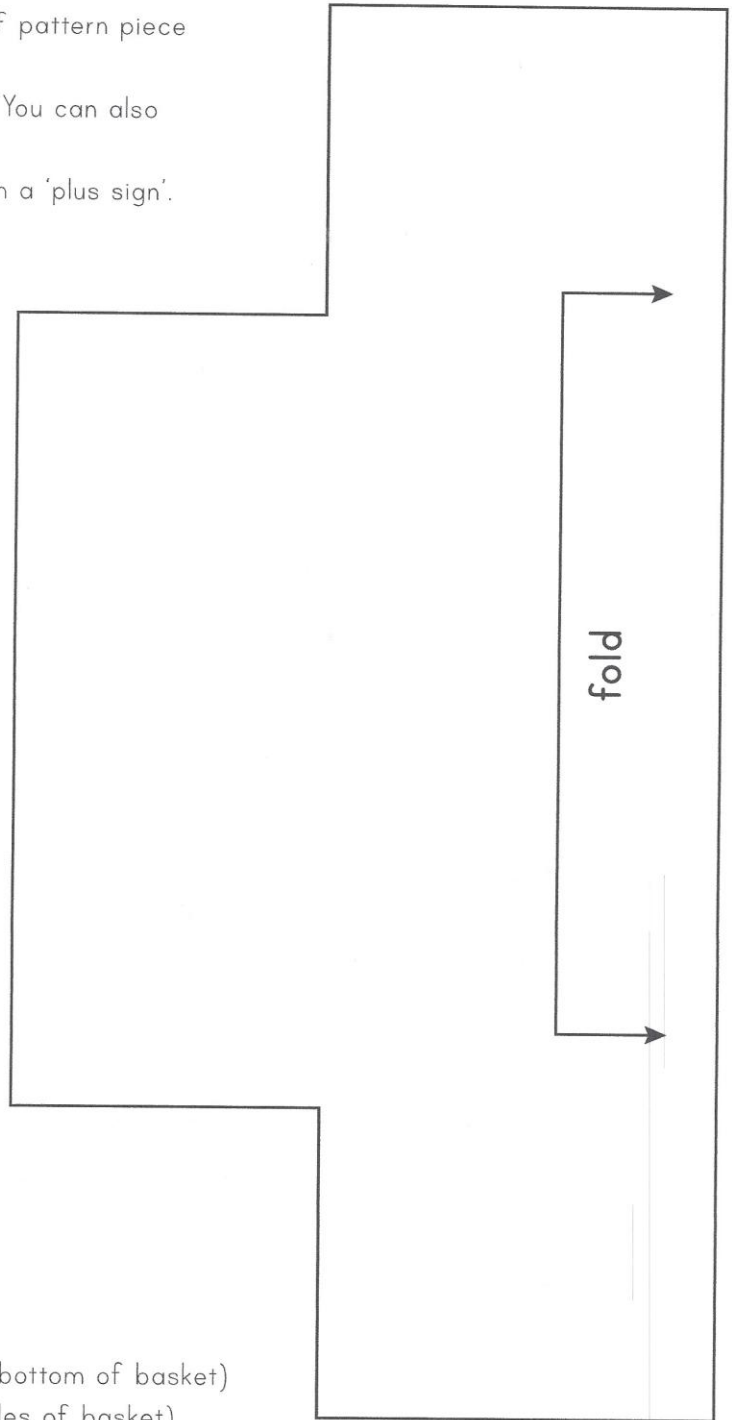
## Berry Basket Pattern - Small

Fold fabric in half, align folded edge of pattern piece with folded edge of fabric.

Cut 2 on fold, one lining, one exterior. You can also print two of these pieces and tape together at fold markings, this will form a 'plus sign'.



Box will measure  
1" square when  
printed at 100%



From double sided fusible interfacing:

Cut one piece 3.75" W x 3.75" T (will be bottom of basket)

Cut four pieces 3.75"W x 2" T (will be sides of basket)

