

# APRIL 2018

## Message from the President

Hello Everyone,

I am not sure if it is ever going to stop snowing! It is very pretty but I think I have had enough! Hopefully we are all getting a lot of sewing done and we will have a great sew and tell.

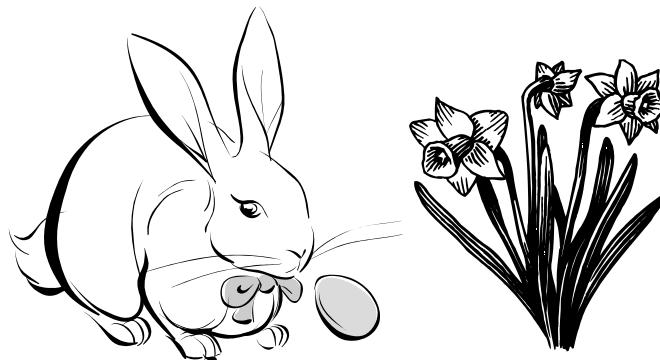
I have had some positive and negative feedback since the last meeting and I have done some thinking and talking about the future. My feeling is this: Quilting is fun and I love sharing my ideas and hearing yours. I love seeing the wonderful projects we work on and I only want the best for the guild. I believe we have an exceptional group of ladies that only want the best for the guild. We all have different ideas and as quilting changes, I believe we can adapt to those changes while still embracing the past. I myself love to learn from those of you who have been quilting for a long time, but I also love to learn new ways of doing things from those who have just begun to quilt.

Unfortunately we have some negative responses, one of which is we need to find a new treasurer. If someone would please step forward for this position it would be very much appreciated. We cannot go without a treasurer and it can be two people sharing the responsibility if you feel more comfortable. The secretary's position has two members and I think it works out great.

I will end my rant on a good note and that is the Shop Hop! For all those participating, have fun!!! I cannot wait to see all the wonderful things you find.

Maybe by the time we meet again, the snow will have stopped and spring will hang around for awhile.

Happy Spring,  
Andrea Blaisdell



### Officers

President  
**Andrea Blaisdell**  
635-8389

Vice President  
**Lisa Vilord**  
888-7239

Secretary  
**Grace Sweet &**  
244-7123  
**Robin Wright**  
635-9550

Treasurer  
**Vacant**

Program Chairman  
**By the Month**

Newsletter Editor  
**Julie Rohleder**  
888-3834

Sunshine Chairman  
**Donna Merriam**  
888-3691

Membership Chairman &  
Librarian  
**Jan Kuhn**  
851-8341

Charity Quilts  
**Marion Seasholtz**  
635-2731

Common Threads  
Quilt Guild  
meets the first Thursday of  
every month  
at 6:30 PM at the  
Sterling View Club House in  
Hyde Park  
Dues are \$15 annually

# Secretary's Report

**Called to order:** 6:30 by President Andrea Blaisdell

**# present:** 24 members present      **Guests:** 3 quests      **New Members:** No new members

**Birthdays:** 4 members are celebrating their birthdays this month, Sally, Millie, Andrea and Donna M.

**Drawings:** Millie won for "Just for coming" and Barb Scribner for "Food Shelf".

**Secretary's Report:** Sharon moved to accept, Marion seconded, passed.

**Treasurers Report:** Sharon moved to accept, Marion seconded, passed. Ginny reported we received thank you from Johnson Food Shelf and the Elmore Church. A request for monetary donation was received from the Lamoille Family Center. Discussion. We donated 6 baby quilts in the fall. Decided no further donation will be sent.

**Sunshine Cards:** Cards sent to Sally after her injury and Kathleen Manning who was hospitalized. Thank you expressed by Anita Morris.

**Sunshine Quilts:** Marion presented a detailed explanation of the Sunshine Quilt program.

## **Highlights:**

2 upcoming workshops are Saturdays March 24<sup>th</sup> and April 28<sup>th</sup> at Sterling View, 9 to 2. Bring a lunch, Marion will bring dessert. Sewing machines needed but also tying quilts is needed. Thank you received from Eric Nichols.

The Sunshine committee is made up of 5 guild members, Martha Corey, Jan Kuhn, Anita Morris, Ruth Wesolow and Linda Worth in addition to Marion. 2 other guild members help though not on the committee, Andrea Blaisdell and Elaine Foster.

Committee members are involved in fabric preparation, quilt size guidelines, etc. Lap quilts are the most frequent ones given but bed size quilts are needed for fire victims. Guild members are encouraged to help with top preparation and the clinics are to finish quilts but should not feel they have to. Some quilts are machine quilted that are given for a fundraiser.

Marion depends on guild members and others to help her identify people in need of a quilt. If you know of someone who has had a fire, or is in need of a quilt because of a health issue please call Marion, 635-2731. She also has a list of people and places that we have donated in the past.

Presently we have an inventory of 10 bed quilts, 19 lap quilts and 12 baby/kid quilts. We have 40 in progress and she just got several back from members. In the past 2 years we donated 210 quilts.

Discussion around the label, Marion is looking into another vendor that may be easier to attach. She will bring back information to the next meeting.

The guild is kept up to date on expenses. The President and Treasurer are consulted about purchases or it is brought to the guild for approval.

Sharon Perry followed with some personal concerns about how guild members support each other and how we question work being done.

**Block of the Month:** 1<sup>st</sup> block, 10 blocks submitted, won by Cindy Smorgans.

2<sup>nd</sup> block, Sheila Cross won.

New block pattern distributed.

**Quilt Show:** Next quilt show will be Columbus Day weekend in 2019. It is time to start organizing it. Quilt Show chair or co-chairs needed. Raffle quilt chair also needed. Andrea would like to see someone (s) step forward at the next meeting. She would also like us to look into a different venue because of the issues we encountered this last year. Discussion around Lamoille Union Middle School.

Marion brought up a that we have an unfinished appliquéd quilt that was from Janet. It is very attractive but would need to be finished. She will bring to the next meeting.

## **New Business:**

Do we want to do Antiques and Uniques this year? It will be on July 14<sup>th</sup>. Motion to attend by Sharon/ seconded by Marion. Discussion. Passed.

## **Shares:**

Maple Leaf Quilter's quilt show in Rutland April 7<sup>th</sup> and 8<sup>th</sup>.

Franklin County Quilt Guild show in St. Alban's April 7<sup>th</sup> and 8<sup>th</sup>.

Ricky Tim's Quilt Luminarium May 3rd & 4th, 2018.

## **Sew and Tell:**

**Program:** Mixed Media by Robin Wright and Julie Rohleder.

## **Adjourned:**

Respectfully submitted by: Robin Wright

## Calendar

March 24 <sup>th</sup>	Sunshine Quilts Workday, 9AM -? Sterling View Clubhouse
April 5 <sup>th</sup>	Regular Meeting, 6 PM Sterling View Clubhouse
April 7 <sup>th</sup> & 8 <sup>th</sup>	Franklin County Quilt Show St. Albans City Hall 9-4 Sat, 10-3 Sun
April 28 <sup>th</sup>	Sunshine Quilts Workday, 9AM -? Sterling View Clubhouse



### Food Shelf Wish List

(Straight from the Food Shelf)

Canned Spaghetti Sauce	Toothpaste
Canned Fruit	Toothbrushes
Canned Vegetables	(for children, too!)
Macaroni & Cheese	Soap
Canned Pasta	Shampoo
Soup	Coffee
Cereal	Healthy Snacks
Tuna	Laundry Detergent
Personal Items for Women	Dish Detergent



### Happy Birthday to:

Annie Morgan  
Tracey Morin

April 10<sup>th</sup>  
April 18<sup>th</sup>

## Sunshine Quilts

We have 2 workdays scheduled this spring:  
Saturday March 24 & Saturday April 28 at Sterling View  
9am until ? Bring a lunch, and I will bring dessert!  
For the March workday we need sewing machines to work on some quilts in progress, and some tyers as well. I will let you know where we are for the April workday.

Thanks! Marion

If you have any questions please call 802-635-2731

### April Program:

Lisa Vilord will be presenting the program on tinting and embroidery designs. Come see some ways to embellish your work!

### *Vermont Shop Hop 2018 is March 16th - March 25th*

#### Shop Hop Hours

Friday, March 16 through  
Saturday, March 24, 9-6 every day!!  
Sunday, March 25, 9-3 (last day!)

To participate, purchase a passport for \$7, plus tax, at any of the 14 participating shops. The first 1,000 Hoppers who purchase a passport will receive a kit to make a 8" x 10½" stained-glass quilt block or wall hanging.

Hoppers must have their passport booklets stamped at all 14 participating shops during the Shop Hop to be eligible to win the Grand prize, the 2nd prize, and 3rd prizes.

Participants with at least seven stamps on their passport are entered in drawings that begin with the 4th prize.

The back cover of the passport booklet has to be turned in at one of the shops before 3pm on Sunday, March 25th to be eligible for the prize drawings.

<https://www.vermontshophop.com/>

## Treasurer's Report

Cash on hand	February 5, 2018		\$4,715.12
Deposits:			
3/2/2018	Dues	\$ 15.00	
3/2/2018	Books	\$ 4.00	
		\$ 19.00	\$4,734.12
Expenses:			
3/1/2018	Julie Rohleder - Newsletter Copies	\$ 3.30	
3/6/2018	Antiques & Uniques	\$ 50.00	
		\$ 53.30	\$4,680.82

Submitted by Jan Kuhn (Temporary Treasurer)



*Next Meeting: April 5<sup>th</sup>, 2018*

*Two things to remember:*

- 1. Show and Tell*
- 2. Food for the Food Shelf*

## Sunshine Quilts March 2018

I have heard that there have been several questions about how the Sunshine Quilts are produced and managed so I thought I would take a few minutes to explain.

We have a committee of 5 guild members. Martha Corey, Jan Kuhn, Anita Morris, Ruth Wesolow & Linda Worth. We also have 2 other members not officially on the committee but who contribute a lot of their time. Elaine Foster helps me schedule the workshops with Sterling View and has been to every workshop I have scheduled. She also took over for me last fall when I couldn't make it to a scheduled workshop. Andrea Blaisdell has attended many of the committee workshops in my studio, and has spent many, many, many hours helping me cut fabric and make kits.

The first thing we deal with is fabric that gets donated. A lot of it needs to get washed if it has an odor or was exposed to little furry feet. I have a machine in my studio, which helps a lot. When it comes out of the dryer it gets ironed and sorted. We sort fabric mostly according to size...if it's big enough for a back it gets separated from smaller pieces that need to be cut up for kits. Some of the smaller pieces are sorted by color. I have a section of my studio that is just for Sunshine Quilt materials. I keep enough fabric there that we can work without having to run back and forth to the shed. There are also many totes of fabric in the shed. It is somewhat organized, and a good bit of it needs to be washed, which we do as we bring it to my studio.

As a committee we established quilt size guidelines to best utilize the fabric we have, and provide a finished product that suits its purpose.

Baby: @ 40" x 40"

Lap quilt: in all themes; men, women, children 42" x 50"

Twin: 65" - 72" wide x 90" x 100" long

Full/Queen: 90" - 92" wide x 98" - 104" long

These are just guidelines. There aren't any hard and fast 'rules'. We accept top and quilt donations in any size. Sometimes we add a border to make it work for what we need. The larger quilts are fairly standard sizes. If we are going to give a bed size quilt to someone who has lost everything to fire it should fit the bed. I try to make sure we always have some of these in the shed so that we are prepared. The size that we use the most of is the lap size, which is what we give to Home Health, Meals on Wheels, someone with an illness etc. I try to make sure we have some 'man' quilts available.

Every year I try to come up with a new pattern or two to keep the kits interesting. If we can introduce something that some guild members haven't tried, I think it makes it more fun. For example: Disappearing 9-patch and Jelly Roll race. I do a lot of cutting when I have the time, and as I said before Andrea has spent many days with me cutting up scrap. Also, the committee members have taken fabric home to cut. At first we did it all with rotary cutters. When I bought the Accuquilt for my business it made the scrap cutting somewhat easier and faster. Some of you have seen me use it at workshops. Sharon Perry also brought hers to a workshop and spent the day cutting for us. When we have enough pieces cut to make kits we sort by color and package the kits with directions, anywhere from 30-60 at a time. Then, as you know, I bring them to the meetings for members to take home and sew. I don't ever want to make it seem like there is pressure to get them done in a certain amount of time, but it helps a lot if they come back within a 3-month period. Last fall I figured there were about 25 kits still out. I couldn't make the Dec meeting so Jan took the container to the meeting, which had another 30 jelly roll kits, so there are over 50 kits out there. We have a sign out sheet so I can keep track of what we have in progress.

I have a basket in my studio for the completed tops. When the basket is full we have a committee workday in my studio and coordinate backs to fronts, sometimes piecing the backs to best use the fabric that we have. We then iron, layer & pin them with batting in preparation for a guild workshop. Most of you have been to a workshop and know that we stitch around the quilts, topstitch and tie them and add that dreaded label. The shed is organized with quilts in progress and finished quilts.

I also want to tell you how quilts are distributed. I work off the original list of recipients. Along the way some have been dropped and some added for various reasons. We have talked in the past as a guild that the quilts should remain in our general area of membership. If a special circumstance comes up I bring it to a meeting for a vote. My habit has been to not distribute quilts around the holidays. The reason is, for many people and organizations that is when a lot of time, \$ and gifts get donated. I tend to go to the Manor and other organizations in the early fall and sometime in the spring when there isn't a lot of other stuff happening. I also try to track down fire victims when I hear about them. This can be difficult unless someone in the guild personally knows them. Also, if any member knows of someone that could use a quilt due to illness they are welcome to call me. I keep track of names only for our guild records. The names will never be displayed publicly. Fire victims generally get bed size quilts, or close to it. Most other donations are lap size. Fund raising (raffle) quilts are queen size. I include a short description of our guild and my contact information with every donation.

If you have any questions about the Sunshine Quilts or you know someone who could use some Sunshine please call me. My number is on the membership list and on the newsletter. If you look it up in the phonebook you will get my fax. Our phone is a business line under Wind's Edge. 635-2731. You can also email me at marion@windsedgestudio.com. I do travel for business from time to time, but if you leave a message I will get back to you.

I try to keep the guild up to date about inventory and expenses. I don't buy anything without permission from the President and Treasurer, and usually I ask all of you at a meeting. The exception is a budget that was board approved for prizes back when Pat Slack was president. However, most of the prizes given are donated. I do invoice the guild for the 5 pack of blades that is given out once a year at my cost. Some of the other things I have been reimbursed for are raffle tickets, irons and scissors for workshops. We usually buy 2-4 rolls of batting per year at my cost which is @\$65 a roll. Last fall I also asked to buy a case of queen batts for raffle quilts - like the one we give Sterling View every year.

It was suggested to me that I let you know a few of the things I give to the Sunshine Quilts. I donated about 150 spools of thread for the workshops, prizes, batting for quilts that are bigger than the batting the guild buys. Sometimes the guild stash just does not have the right fabric to finish a top. I machine quilt every quilt we give as a fundraiser, to give it maximum value. For example the queen size quilts we give to Sterling View every year, and when we give them to Food Share & some other fundraisers. I try to keep one in the shed in case something comes up so we are prepared.

One of the things I feel responsible for is keeping track of what we donate. I feel responsible to you the guild, and we should be able to tell potential donors / raffle ticket buyers what we do for the community. This is why when you would like to give a quilt to someone you should call me. It would just make things more complicated if several people were taking them out of the shed. I need to be able to keep track of what we have, and where it goes.

Our quilt donations so far, since the quilt show are : Queen size to Sterling View, 1 baby was sold at the show, 1 lap was given as a thank you for help at the show, 1 lap for a cancer patient & 1 lap quilt for the LACN silent auction last month. Our inventory in the shed is: 10 bed quilts, 19 lap quilts and 12 baby/kid quilts. We also have @40 quilts in progress.

I work full time, and sometimes double time running a business. In order for me to make sure we have inventory available for a need I try to plan ahead. When I took over I was given a list of donations. Quilt donation records were kept from quilt show to quilt show, which is still the case. The average at that time was @ 100 quilts per cycle. This past 2 year period we donated 210 quilts. I read this list last fall, it was on the posters at the show and I have 4 copies with me if you would like to see where they went.

Part of the reason I am explaining all of this now is I have heard from several people that there were questions about how I was organizing this whole process. Everyone does things differently, and it doesn't make one way wrong - this is just how I know best to handle the production and distribution. A lot of work goes into producing the quilts we give away, and there are a lot of members who put in a lot of time to make this happen. If the guild is unhappy with what I am doing I am willing to listen to suggestions. I am also willing to step aside if someone else wants to take over.

Marion Seasholtz, Charity Quilt Chair

## 20<sup>th</sup> Annual Spring Quilt Show

**St. Albans, VT-** The Franklin County Quilters Guild hosts its 20<sup>th</sup> annual Quilt Show on Saturday, April 7<sup>th</sup> and Sunday, April 8<sup>th</sup>, 2018 in the newly renovated St. Albans City Hall, 100 North Main Street. This event is FREE and open to the public. On Saturday the quilt show hours are 9:00AM to 4PM while on Sunday the doors will open at 10:00AM until 3:00PM. In honor of this year being the 20<sup>th</sup> Anniversary of the Quilt Show, Denise Quint, the show's founder plans to travel from Maine to attend.

The St. Albans City Hall will be filled with over 100 quilts for display. In addition to viewing the many quilts show attendees can bid on beautifully handcrafted items including handbags, hot mats and small quilts or take a chance on the guild's Raffle Quilt beautifully constructed by Denise Chase and long arm quilted by Babette Coons. Attendees can also shop at vendors booths featuring quilt related items such as patterns, fabrics and notions. On the street parking is available as well as a parking garage that can be accessed from either Lake or Federal Streets. The city's coffee shops, restaurants and stores are open on Saturday and have limited hours on Sunday.

Throughout the day, guild members and vendors will provide demonstrations of various quilting techniques. In honor of the late Ann Goergen-Jacobs, past president of the guild, there will be a special display of some of her most memorable quilts, on loan from her family. Some of the quilts that members make and donate to charities such as Laurie's House, Home Health, people with Breast Cancer, and Fires and Other Disasters will also be on display. The guild has donated over 1,000 quilts to charities and individuals since it was founded in 1991.

The Franklin County Quilters Guild is grateful to our sponsors: *Gold Level*-Handy Toyota, The Sportsman's Club of Franklin County, VFW Auxiliary Post 758, Vietnam Veterans of America Chapter 753, Tanneberger Veterinary Hospital and Yankee Pride Quilts. *Silver Level Sponsors*-American Legion, Green Mountain Post #1, Franklin County Rehab Center, LLC, Mountain View Dairy Equipment and Sassy Scissors Salon. *Bronze Level Sponsors*-The Eloquent Page, Hannaford's Supermarket and Pharmacy #8355 and People's Trust Company. Our generous sponsors and proceeds from the raffle quilt and teacup auction allow the guild to defray the costs of the show so the public can enjoy our quilts.

## ROAD

### Four colors

S & P=beige/off white

R=green

T & Q=rust/red

O=blue

### Cutting

Beige—S—cut 1- 4 7/8" square—cut on diagonal for 2 triangles

P—cut 4—2 7/8" squares—cut on diagonal for 8 triangles

Green—R—cut 2—4 7/8" squares—cut on diagonal for 4 triangles

Rust/Red—T—cut 2—4 7/8" square—cut on diagonal for 2 triangles

Q—cut 2—2 1/2" squares

Blue—O—Cut 3—2 1/2" squares

### Sewing

- 1) Sew S (beige) to T (Red) to form a square
- 2) Sew 1 R (green) to each side of the S/T (beige/Red) squares -See A
- 3) Sew 2 P (beige) triangles to 1- O (blue) square—See B
- 4) Sew 2 P (beige) to Q (red) square—See C
- 5) Sew 1 P (beige) to 1- O (blue) square—See D
- 6) Sew P/Q (beige/red) pieces to each side of P/O/P (beige/blue/beige) piece—See E
- 7) Sew P/O (beige/blue) pieces to each side of Q/O/Q (red/beige/red) piece
- 8) Sew large triangles to each side of P/O/Q (beige/blue/red) strip—See F

