

# April 2010

## Message from the President

Hi to all of you,

Spring is in the air; I can smell it, really! I am even repeating my usual foolishness; dashing to the store, buying seeds and potting soil, planting, watching the little devils sprout and start to grow and then croak. Why? Because it's at least two months before I can put them in the garden. Oh well!

Along with the coming of Spring, Common Threads has so much to look forward to. Our mini quilt trip will be here soon and I hope all of you who wanted to go made the deadline. Plans and details are coming together for the Deb Caffrey Trunk Show and workshops in June.

This brings me to a subject that will not win a popularity award, VOLUNTEERING! We have so many wonderfully talented people and fresh blood always brings new ideas. (Are you convinced yet?) Seriously, there are events coming up where we will be asking for help and, believe it or not, we are fast approaching the time for beginning to plan our next Quilt Show. Think about it!

See you all at our next meeting and don't forget to bring extra change for the Tea Cup Auction.

Take care, *Kathy Krypel*



## Officers

President  
**Kathy Krypel**  
888-2993

Vice President  
**Martha Duffy**  
644-2443

Secretary  
**Ruth Wesolow**  
888-3309

Treasurer  
**Rita Lehouillier**  
888-6465

Program Chairmen  
**Martha Duffy**  
644-2443  
& **Andrea Blaisdell**  
635-8389

Newsletter Editor  
**Julie Rohleder**  
888-3834  
innkeeper@  
fitchhillinn.com

Sunshine Chairman  
**Lilalee Fellows**  
888-4426

Membership Chairman  
**Sharon Perry**  
326-3135

Charity Quilts  
**Anita Robert**  
888-7622

**Joyce LaRow**  
888-7876

**Elaine Foster**  
888-4868

& **Barb Scribner**  
253-7741

Block of the Month  
**Barbara O'Toole**

Common Threads  
Quilt Guild  
meets the first Thursday of  
every month  
at 7:00 PM at the  
Sterling View Club House  
in Hyde Park  
Dues are \$15 annually

# Treasurer's Report

February 11, 2010 - March 13, 2010

## INCOME

	Cash Balance 2/10/10		\$	6,053.43
<b>Income:</b>				
3/8/2010	Memberships			8.00
	<b>Total Income</b>		<b>\$</b>	<b>6,061.43</b>
<b>Expenses:</b>				
3/4/2010	Ck. #422	Martha Duffy (supplies for program)	\$	12.99
" "	Ck. #423	Julie Rohleder (copies \$25.41; postage 22.00)	\$	47.41
3/5/2010	Ck. #424	Void (error)	\$	-
" "	Ck. #425	Out & About (memoriam Carol Muncie's Mom)	\$	25.00
		TD Bank ( checks)	\$	24.03
		<b>Total Expenditures</b>	<b>\$</b>	<b>109.43</b>
	Cash Balance March 13, 2010		<b>\$</b>	<b>5,952.00</b>

Respectfully Submitted, *Rita Lehouillier*

# Secretary's Report

On March 4, 2010 the Common Threads Quilt Guild met at Sterling View with 40 members present. Motion was made by Mary Dick to accept the Secretaries report seconded by Barb O'Toole. So moved.

Millie Piper won for "Just for coming" and Andre Blaisdell won for "Canned goods"

Kathy Krypel asked for four volunteers to care for the "Library" They include Flo, Pierette and Robin.

Cathy Walker from Berlin Health and rehabilitation picked up eight quilts to hang in their hallway.

Per Sharon Perry there are currently 80 members.

Show and tell pictures will be on the website. Also if you have pictures from the quilt show send them to Sharon.

Barb O'Toole has the second part of the mystery quilt

Pat Slack tells us the Raffle quilt is ready to be quilted and a committee will be formed to come up with places to sell tickets and someone is needed to be in charge of the tickets.

Programs: April Teacup auction; May handbag demonstration.

Barb Scribner made a motion to keep the same officers for the next year. So moved

The Franklin County Quilt show will take place April 10 and 11

Respectfully Submitted, *Ruth Wesolow*, Secretary

# Calendar

- Apr 1<sup>st</sup> Regular Guild Meeting, 7PM  
Sterling View Clubhouse  
Teacup Auction
- Apr 10<sup>th</sup>-11<sup>th</sup> Spring Flood of Quilts  
Franklin County Quilt Show  
St. Albans City Hall
- Apr 10<sup>th</sup>-11<sup>th</sup> Johnson Town Hall Sewing Days  
Contact: Barb O'Toole, 635-9384  
[Vtquilter06@yahoo.com](mailto:Vtquilter06@yahoo.com)
- May 15<sup>th</sup>-16<sup>th</sup> Johnson Town Hall Sewing Days  
Contact: Barb O'Toole, 635-9384  
[Vtquilter06@yahoo.com](mailto:Vtquilter06@yahoo.com)

## APRIL PROGRAM TEACUP AUCTION

All the items received will be arranged in lots and baskets before the April meeting. Bring your money for a chance to win. The money goes toward the quilting classes, sunshine quilts, and local charities. Tickets will be 4 for \$1. Good Luck!

## MAY – HANDBAG / TOTE DEMO NIGHT

Multiple mini-demos to show different ways to make bags. We are hoping to have at least four people demonstrating at the same time that night.

## JUNE – DEBBIE CAFFREY TRUNK SHOW & WORKSHOPS

Thursday meeting will be the trunk show. Friday & Saturday will be workshops. See attached photos & registration form.



*Happy Birthday to:*



*Madeleine Hooper  
Cormetia Sweetser  
Kathy Krypel  
Annie Morgan  
Bonnie Lefevre  
Martha Russell  
Mary Dick  
Sue Gilbert*

*April 2<sup>nd</sup>  
April 3<sup>rd</sup>  
April 4<sup>th</sup>  
April 10<sup>th</sup>  
April 11<sup>th</sup>  
April 15<sup>th</sup>  
April 22<sup>nd</sup>  
April 26<sup>th</sup>*

# COMMON THREADS WEBSITE CONTINUES TO GROW

The guild's website has more and more information available everyday. The past three newsletters can be found on the website along with a brief history of the guild, 2009 quilt show pictures, and pictures from the show and tell in March.

The webmaster plans to continue to add to the website based on the needs of the guild and its members. At the March meeting, it was suggested to add a webpage listing guild members' businesses. The webmaster is ready to respond to that request; now all he needs is the information from the business owners.

If you have a business and would like it listed on the Common Threads website, please send the following information via email to [commonthreadsvt@gmail.com](mailto:commonthreadsvt@gmail.com):

- Business Name:
- Mailing Address:
- Phone Number:
- Website (if any):
- Email Contact:
- Brief description of the services provided:
- Any other information you want to provide (please keep it brief):



## Food Shelf Wish List

(Straight from the Food Shelf)

- |                   |                                   |
|-------------------|-----------------------------------|
| Spaghetti Sauce   | Toothpaste                        |
| Canned Fruit      | Toothbrushes (for children, too!) |
| Canned Vegetables | Soup                              |
| Soap              | Baked Beans / Bean Soup           |
| Shampoo           | Peanut Butter                     |
| Tuna              | Macaroni & Cheese                 |
| Cereal            | Brown or White Rice               |
| Noodles           | Toilet Paper (pre-wrapped)        |
| Oatmeal           | Noodle Soups                      |
| Whole-wheat flour | Quick Bread or Muffin Mix         |
| Shredded Wheat    | Barley                            |
| Cream of Wheat    | Mustard / Ketchup                 |
| Cornmeal          | Granola                           |
| Pretzels          | Pancake Mix                       |
| Dried Milk        | Biscuit Mix                       |
| Crackers          | Rice Pilaf                        |
| 100% Juices       | Raisins or Peanuts                |
| Baby Food         | Canned Tomatoes / Tom. Paste      |



*Next Meeting: April 1<sup>st</sup>*

*Things to remember:*

- 1. Bring a canned item for the food shelf*
- 2. Bring your Show & Tell!*
- 3. Bring your \$\$ & address labels for the teacup auction!*

### **Spring Flood of Quilts Coming to Saint Albans, Vermont**

The Franklin County Quilters Guild hosts its 12<sup>th</sup> annual Franklin County Quilt Show on Saturday, April 10<sup>th</sup>, and Sunday, April 11<sup>th</sup>, 2010, at Saint Albans City Hall, 100 North Main Street. This event is FREE and open to the public. The FREE admission gives show attendees a chance to win a beautiful door prize basket filled with items such as local maple syrup, candles, lotions, gardening gloves, tea, coffee, and much, much more. On Saturday, the quilt show hours are 9:00 a.m. to 4:00 p.m. while on Sunday the quilt show will be open from 10:00 a.m. until 3:00 p.m.

Over 100 quilts will be on display at the main venue of the weekend, the Franklin County Quilt Show in the City Hall gymnasium. In addition to viewing the many quilts, show attendees can bid on beautifully handcrafted quilts at the guild's silent auction or take a chance on the guild's raffle. Viewers can also shop at vendor booths featuring quilt-related items such as fabric or sewing notions.

Come see the flood of quilts in Saint Albans on Saturday, April 10<sup>th</sup>, and Sunday, April 11<sup>th</sup>, and enjoy the time-honored tradition of quilt making. For more information, call 802-326-3135, email [franklincountyquilters@gmail.com](mailto:franklincountyquilters@gmail.com), or visit [www.vtmooses.us/fcqq.html](http://www.vtmooses.us/fcqq.html) on the web. City Hall is wheel-chair accessible.

Registration #:

# REGISTRATION FORM

## DEBBIE CAFFREY WORKSHOPS, JUNE 4<sup>th</sup> & 5<sup>th</sup>, 2010

Name: \_\_\_\_\_ Phone: \_\_\_\_\_

Address: \_\_\_\_\_ Email: \_\_\_\_\_

City: \_\_\_\_\_ State: \_\_\_\_\_ Zip Code: \_\_\_\_\_

Emergency Contact:

Name: \_\_\_\_\_ Phone: \_\_\_\_\_

The cost for each Workshop is **\$45.00 nonrefundable**, payable upon registration: the workshop fee includes snacks for the day. The guild will accommodate requests to sign-up for both workshops **AFTER** all guild members have had an opportunity to register for one workshop. Registration forms will be processed on a first-come, first-served basis, based on receipt date and/or time. A supply list will be sent in your self-addressed, stamped envelope (SASE). To insure a space in class, all guild members must sign up by May 6. **Lunch supplied by attendee.** Location of workshops will be at Sterling View, Hyde Park

Workshops

**Friday, June 4 9:00 AM – 4:00 PM Making Tracks:**

**Saturday, June 5 9:00 AM – 4:00 PM From the Mountains:**

Costs

**Please Circle choice below**

1<sup>st</sup> Choice      2<sup>nd</sup> Choice

1<sup>st</sup> Choice      2<sup>nd</sup> Choice

Friday Workshop      \$ \_\_\_\_\_

Saturday Workshop      \$ \_\_\_\_\_

**GRAND TOTAL**      \$ \_\_\_\_\_

Please make check(s)\* payable to:  
**Common Threads Quilt Guild**

***\*Please include two separate checks,  
each for \$45, if you want to request  
both workshops.***

Please mail your registration form, check(\*),  
And SASE **no earlier than March 26, 2010** to:

Barbara O'Toole      Phone: 635-9384  
3258 Upper French Hill Rd  
Johnson, VT 05656

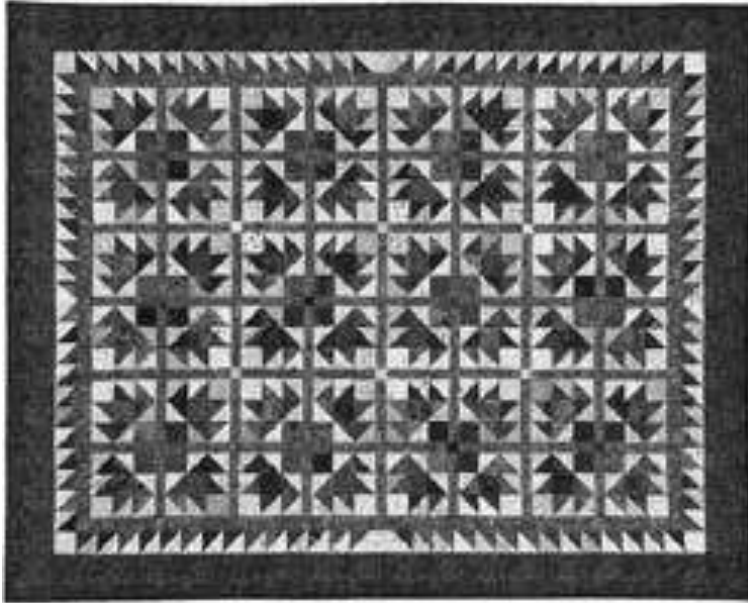
I release the Common Threads Quilt Guild and its members, Debbie Caffrey, and Sterling View from any and all liability associated with my participation in these workshops.

\_\_\_\_\_  
Printer Name

\_\_\_\_\_  
Signature

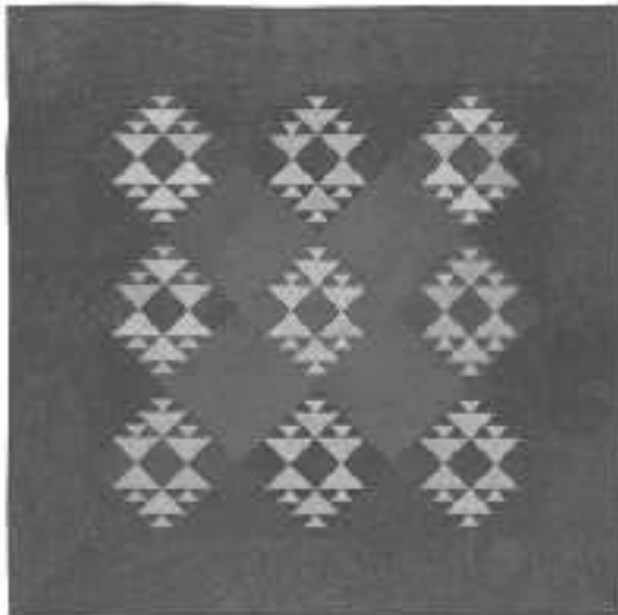
## Friday, June 4<sup>th</sup> - *Making Tracks*

Using the great Method #4 (bias strips) technique for making half-square triangle units from Debbie's book *Power Cutting, Too*, you will learn how to make triangle units by the dozens quickly, precisely, with no individual pressing, no dog ears to trim, and no paper to tear! Use the units to make "Coyote Tracks", "Winter Trails" (both of these quilts are in the *Power Cutting, Too* book), or any other quilt requiring numerous small half-square triangle units.



## Saturday, June 5<sup>th</sup> - *From the Mountains*

This workshop presents two quilts from *Shape Up Your Fat Quarters* (Delectable Mountains and Rocky Mountain Puzzle) and one from *Scraps to You, Too* (Gold Nuggets). During the morning, quilters will make one sample block of each of the three patterns. The quilters will spend the afternoon working on one of the three patterns, quilter's choice.



# MAY BUS TRIP

**Dates: May 1<sup>st</sup> & 2<sup>nd</sup>**

**Package includes:**

1 night lodging, hot continental breakfast, 1 lunch, 1 dinner and stops at 5 quilt shops. Also includes baggage handling, driver's accommodations, and tour manager, all on a luxury motor coach. Prices are based on 50 paid travelers.

Reservations and deposits (at least 50%) are due by March 12. Balance is due by April 5.

The tour will be open to others outside our guild after March 15 to insure our 50 passengers otherwise the price will go up. (Guild members can still sign up - don't wait too long or there won't be enough room!)

Prices: per person single occupancy - \$203.00  
per person double occupancy - \$159.00  
per person triple occupancy - \$146.00  
per person quad occupancy - \$138.00

Price does not include gratuities for motor coach driver and tour manager. We will "pass the hat" for that.

**To reserve your spot on the bus call:**

Notch Above Tours

Gwendy Lauritzen

802 881 0661

Fax: 802 881 0663

824 West Lakeshore Drive, Suite 3

Colchester, VT 05446

[www.notchabovetours.com](http://www.notchabovetours.com)

[gwendy48@comcast.net](mailto:gwendy48@comcast.net)

If anyone has questions they can call Andrea or Gwendy.

Andrea Blaisdell: 635-8389 or email: [asblaisdell@yahoo.com](mailto:asblaisdell@yahoo.com).

**SPRING OPEN HOUSE / SALE  
WILD IVY DESIGNS**

Paper jewelry / bird prints / cards  
April 17<sup>th</sup> 9 AM - 3PM  
at the home of Barb Scribner  
114 Elmore Mountain Road, Stowe  
Follow the green balloons  
or call 253-7741 for directions

**GREEN MOUNTAIN  
QUILTERS GUILD**

Spring Meeting: May 15<sup>th</sup>, 9AM - 3PM  
Whitcomb High School, Rte 12, Bethel  
Chinese Auction, Speaker, Show & Tell,  
Merchants Mall.  
Dues \$15 / year