

March 2010

Message from the President

Hi Ladies,

I don't know about you, but this winter seems to be flying by for me! Crazy, but I think it has something to do with the sunshine we've been fortunate enough to have. Believe it or not, I could use a little more snow for snowshoeing! I've also been very busy finishing projects that I had forgotten I had so that I can shop 'til I drop on our trip in May! I hope we have a wonderful turnout; it will be soooo much fun.

Have you seen our new website? Wow, now there's a man that gets things done! Many thanks Scott and Sharon. This should present lots of possibilities for the guild.

Another great program with Martha, Andrea and Mary. Thanks to you all.

See you in March for BINGO!

Take care, *Kathy Kruppel*



Officers

President
Kathy Kruppel
888-2993

Vice President
Martha Duffy
644-2443

Secretary
Ruth Wesolow
888-3309

Treasurer
Rita Lehouillier
888-6465

Program Chairmen
Martha Duffy
644-2443
& **Andrea Blaisdell**
635-8389

Newsletter Editor
Julie Rohleder
888-3834
innkeeper@
fitchhillinn.com

Sunshine Chairman
Lilalee Fellows
888-4426

Membership Chairman
Sharon Perry
326-3135

Charity Quilts
Anita Robert
888-7622
Joyce LaRow
888-7876
& **Elaine Foster**
888-4868

Block of the Month
Barbara O'Toole

Common Threads
Quilt Guild
meets the first Thursday of
every month
at 7:00 PM at the
Sterling View Club House
in Hyde Park
Dues are \$15 annually

Treasurer's Report

January 13, 2010-February 10, 2010

INCOME

	Cash Balance 1/10/10		\$	6,141.85
Income:				
2/9/2010	Memberships			38.00
	Total Income		\$	6,179.85
Expenses:				
2/4/2010	Ck. #420	Anita Robert (charity quilts)	\$	81.22
" "	Ck. #421	Julie Rohleder(copies \$23.64; postage 21.56)	\$	45.20
			\$	126.42
	Cash Balance Feb. 10, 2010		\$	6,053.43

Respectfully Submitted, *Rita Lehoullier*

Secretary's Report

On February 4, 2010 the Common Threads Quilt Guild met at Sterling View with 40 members and 1 guest present.

Lois Keith won for bringing canned goods and Rita Lehoullier won "Just for Coming"
Connie made a motion to accept the Secretaries report seconded by Annie. So moved.

The next workshop for Sunshine Quilts will be February 12.

Berlin Health and Rehabilitation has requested a loan of some sunshine quilts to hang as to brighten up a hallway. Motion made by Mary Dick, seconded by Ginny. So moved.

Sharon Perry reported that we currently have 79 paid members.

The mystery quilt - #5 and # 6 available and the finishing for the second. The third mystery quilt pattern will be in the newsletter. Any questions please see Barb O'Toole.

The raffle quilt top is almost finished. There will be a workshop at the Johnson Town Hall on Saturday February 13, 2010.

The program for March will be "Quilt Bingo" The instructions are in the newsletter. Please bring a fat quarter or an item for the prize basket.

A Committee will be formed to discuss the prospect if creating a cookbook as a fund raiser.

The Debbie Caffrey trunk show and classes were discussed.

Andrea had more information about the bus trip in May.

Sharon Perry spoke to the guild about the website. The cost will be \$150.00 for the set up and name registration. A motion was made to let Scot Perry handle the details seconded by Connie

Cancer walk will be June 19, 2010.

Respectfully Submitted, *Ruth Wesolow*, Secretary

Calendar

- Mar 4th Regular Guild Meeting, 7PM
Sterling View Clubhouse
BINGO night!
- Mar 20-21st Johnson Town Hall Sewing Days
Contact: Barb O'Toole, 635-9384
Vtquilter06@yahoo.com

MARCH PROGRAM-BINGO

Refer to the directions for an example of how to make your blocks. Don't forget buttons to use as chips! Also, bring your fat quarters for prizes and any other items you wish to donate.

APRIL - TEACUP AUCTION

March will be your last chance to bring in your items for the Teacup Auction. We will be arranging items for lots and baskets before the April meeting. In April, bring your money for a chance to win. The money goes toward the quilting classes, sunshine quilts, and local charities. Tickets will be 4 for \$1. Good Luck!

MAY – HANDBAG / TOTE DEMO NIGHT

Multiple mini-demos to show different ways to make bags. We are hoping to have at least four people demonstrating at the same time that night.

CALLING ALL QUILTERS TO SHARE THEIR KNOWLEDGE!!

If you have something that you would like to demonstrate or knowledge in something quilt related that you would like to share at a future meeting as a program, please let Martha or Andrea know. We are looking for new and fresh ideas to consider for next year. We need whole programs or people willing to be part of the mini-demo nights. We are also still looking for people to share their knowledge in hand-quilting and hand-piecing as part of a multi mini-demo night. Don't feel you have to be perfect to show people how you do something. We all want to learn something new or old. Jump in there and go for it!

SUNSHINE QUILTING NEWS

We are happy to report that we completed the machine sewing on a grand total of 20 quilts at the work day on Friday, Feb. 12th, thanks to the eight hard working ladies who attended. Thanks to all of you who sewed on Friday..... **and** all of you who donated fabric, cut up fabric, made up kits, sewed tops together, put on bindings, made labels, made quilts, tied quilts, etc., etc., etc. Only through the participation of so many members are we able to provide the number of quilts we do to people who need support. Thanks again.

Also, the eight quilts we are lending to The Berlin Health and Rehab. Facility have their hanging sleeves attached and are ready to be picked up. Pictures will be taken of them on display in the new wing, and will be available for you to see as soon as this can be accomplished.

Elaine Foster
Joyce LaRow
Anita Robert
Barbara Scribner



Happy Birthday to:

*Sally Cabell
Carol Munsie
Pierette Marsh
Millie Piper
Mary Sargent
Donna Phelps
Andrea Blaisdell
& Norma Donovan*

*March 3rd
March 11th
March 15th
March 17th
March 21st
March 27th
March 29th*



Next Meeting: March 4th

Things to remember:

- 1. Bring a canned item for the food shelf*
- 2. Bring your Show & Tell!*
- 3. Bring your BINGO card(s) and buttons!*
- 4. Bring any items for the teacup auction—we are doing advance organization this year!*



Food Shelf Wish List

(Straight from the Food Shelf)

Spaghetti Sauce
Canned Vegetables
Shampoo
Cereal
Oatmeal
Shredded Wheat
Cornmeal
Dried Milk
100% Juices

Toothpaste
Soup
Peanut Butter
Brown or White Rice
Noodle Soups
Barley
Granola
Biscuit Mix
Raisins or Peanuts

Canned Fruit
Soap
Tuna
Noodles
Whole-wheat flour
Cream of Wheat
Pretzels
Crackers
Baby Food

Toothbrushes (for children, too!)
Baked Beans / Bean Soup
Macaroni & Cheese
Toilet Paper (pre-wrapped)
Quick Bread or Muffin Mix
Mustard / Ketchup
Pancake Mix
Rice Pilaf
Canned Tomatoes / Tom. Paste

This mystery quilt pattern first appeared in Traditional Quiltworks Magazine, Issue 58 in November 1998. It is a three part series. Each part will have some cutting and piecing instructions. Construction of the quilt requires basic rotary cutting and machine piecing skills.

Light 3 yards
Medium 1 1/2 yards
Dark 2 yards
Optional Border 2 1/8 yards*
Binding 1 yard*

Sew What?

A Mystery Quilt Pattern by Debbie Caffrey

Finished size of quilt before borders is 50" x 64".
The addition of an optional border will allow you to enlarge the quilt to a twin size.

Fabric Selection:

The most important thing to remember when selecting fabrics for a mystery quilt is **CONTRAST!!!** This quilt uses a light fabric, which will create a background for the pattern, and two accent fabrics that have strong contrast with the background. I refer to the accent fabrics as a medium and a dark value. Use one color family for a monochromatic effect or as many as three colors. If you look at the fabrics that I've chosen, you will see that the red and green are both fairly dark in value. Therefore, I relied upon a contrast in color to help differentiate the two accent fabrics. The red fabric was designated to be the medium, and the green was labeled the dark.

I began my fabric selection with a focus or theme fabric. Because of the pictorial nature of my focus fabric, I chose to use it only as a border, and selected three other fabrics for piecing the quilt top. Your focus fabric could be used as the medium or dark accent fabric.

Select a variety of scales and visual textures for interest. I strongly encourage you to avoid directional and one way design fabrics.

Choose fabrics that you like. Rarely do I give any hint about what colors I've used to make my quilt. This time I made an exception. Any colors will be successful in this quilt as long as you achieve enough contrast to show the pattern.

Yardage Requirements:

These instructions are written with the assumption that there is at least 42" of usable fabric between the selvages. Unless your fabrics are extremely narrow, you will have plenty of fabric. I allow extra for shrinkage, straightening, and *minor* goofs.

**Border and binding may be purchased after you've solved the mystery, but more of the same fabrics may not be available at that time.*

Other Tools & Supplies:

Rotary cutter, mat, & rulers

Sewing machine

Thread to blend with your fabrics

Cutting for Step 1:

Strips are cut across the width of the fabrics, making them approximately 42" long with selvages on each of the short ends.

Light

Cut two strips 12 1/2" wide.

Cut these strips into fourteen 3 1/2" x 12 1/2" rectangles.

Cut two strips 4 1/4" wide.

Cut these strips into twelve 4 1/4" squares.

Cut five strips 3 1/2" wide.

Cut these strips into fifty-two 3 1/2" squares.

Cut one strip 2 1/2" wide.

Cut this strip into sixteen 2 1/2" squares. Cut two more 2 1/2" squares from the leftovers of the wider strips that you cut above, making a total of eighteen 2 1/2" squares.

Medium

Cut three strips 4 1/4" wide

Cut these strips into twenty-four 4 1/4" squares.

Cut six strips 1 1/2" wide.

Cut these strips into 160 squares (1 1/2").

Dark

Cut two strips 4 1/4" wide
Cut these strips into twelve 4 1/4" squares.

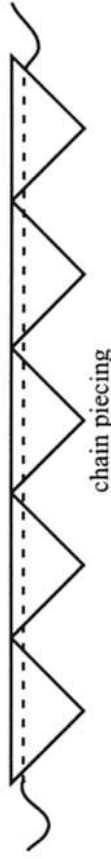
Cut five strips 2 1/2" wide.
Cut these strips into eighty 2 1/2" squares.

Cut five strips 1 1/2" wide.
Cut these strips into eighty 1 1/2" x 2 1/2" rectangles.

Piecing for Step 1:

Sew with 12 stitches per inch (2.0).

Chain piece whenever possible.



Place each 4 1/4" square of light fabric, right sides together, onto a 4 1/4" square of medium fabric. Cut each of the twelve pairs of squares once, diagonally, to make two pairs of half-square triangles from each.

Sew the pairs of triangles together along the long diagonal side to make twenty-four half-square triangle units. Press the seam allowances toward the medium fabric. **The success of your quilt depends upon precise seam allowances.** These half-square triangle units should measure 3 7/8" square.

Repeat the above steps with the remaining 4 1/4" squares of dark and medium fabrics to make twenty-four half-square triangle units like the one shown at the right. Press the seam allowances toward the medium fabric.

Trim the dog ears from all of the half-square triangle units to eliminate bulk and increase your precision.



Place a 2 1/2" square of dark fabric on one corner of a 3 1/2" square of light fabric. Stitch on the diagonal of the dark square, as shown by the dotted line.

Flip the corner up to check your stitching. If it is correct, trim the excess, leaving 1/4" for seam allowances. Press the seam allowances toward the dark fabric.

Repeat the above steps to make fifty-two units.

Use the fourteen 3 1/2" x 12 1/2" rectangles, the remaining twenty-eight 2 1/2" squares of dark fabric, and the same sew and flip technique from above to make fourteen sections like the one shown below.



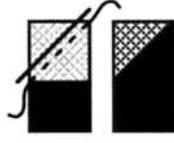
make 14

Place a 1 1/2" square of medium fabric on one end of a 1 1/2" x 2 1/2" rectangle of dark fabric. With the sew and flip technique described for the pieces above, make a unit like the one shown. Check your work. Trim, leaving 1/4" for seam allowances, and press the seam allowances toward the medium fabric.

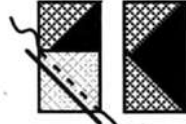
Repeat the above step to make eighty units.

Use the eighty units, the remaining eighty 1 1/2" squares of medium fabric, and the sew and flip technique to make eighty "flying geese" like the one shown. Trim. Press the seam allowances toward the medium fabric.

Sew one of the units from above to each of the eighteen 2 1/2" squares of light fabric to make eighteen units like the one shown. Press the seam allowances toward the light square.



make 80



make 80



make 18

Quilt Bingo

Materials for 1, 10½ inch block (your bingo card)

Choose fabric from the following categories:

Batik	Star	Polka Dot
Floral	Striped	Plaid
Heart	Geometric	Solid
Paisley	Novelty	1930's Print
Leaf	Holiday	Metallic (somewhere in fabric)

All squares are 2½ inch squares, with a ¼ inch seam allowance.

- 5 squares assorted blue patterns / solid
- 5 squares assorted yellow and orange patterns / solid
- 5 squares assorted green patterns / solid
- 5 squares assorted red patterns / solid
- 4 squares assorted pink and purple patterns / solid
- 1 square black for the center (free spot)

For each color, select 5 (4 for pink/purple) different patterns / solid. You can repeat the patterns in several different colors if you like.

Block Assembly

1. Join 5 greens from the list to make the first row. In the same manner, make the blue, red, and yellow/orange row.
2. Join 2 pink/purple squares twice so you have two pairs. Join one pink/purple pair on each side of the black square to complete the pink/purple row.
3. Join rows, placing them side by side vertically in this order: Green, Blue, Pink/Purple, Red, Yellow/Orange.
4. Bring buttons for Bingo Chips.

Green Paisley	Blue Batik	P/P Metallic	Red Polka Dot	Y/O Stripe
Green Stripe	Blue Leaf	P/P Star	Red Novelty	Y/O Heart
Green Star	Blue Holiday	Black	Red Geometric	Y/O Floral
Green Leaf	Blue Stripe	P/P Batik	Red Heart	Y/O Star
Green 1930's	Blue Plaid	P/P Floral	Red Batik	Y/O Paisley

This is an example layout - make up your own combination of patterns.

Don't repeat a pattern in any column, but feel free to use the same pattern in as many different colors as you want!

We will have a basket with prizes for the winners. We are asking everyone to bring one fat quarter to put in the basket. If you would like to donate other small items or patterns, they would be much appreciated.

Make more than one block if you would like, they will be collected at the end for making Sunshine quilts. You will be allowed to play 4 blocks at a time. Share the others with friends!

Any questions, call Martha Duffy at 644-2443.

Mystery Quilt # 1

Welcome to the 6th installment of our Mystery Quilt. This week you will be working on Block 2.

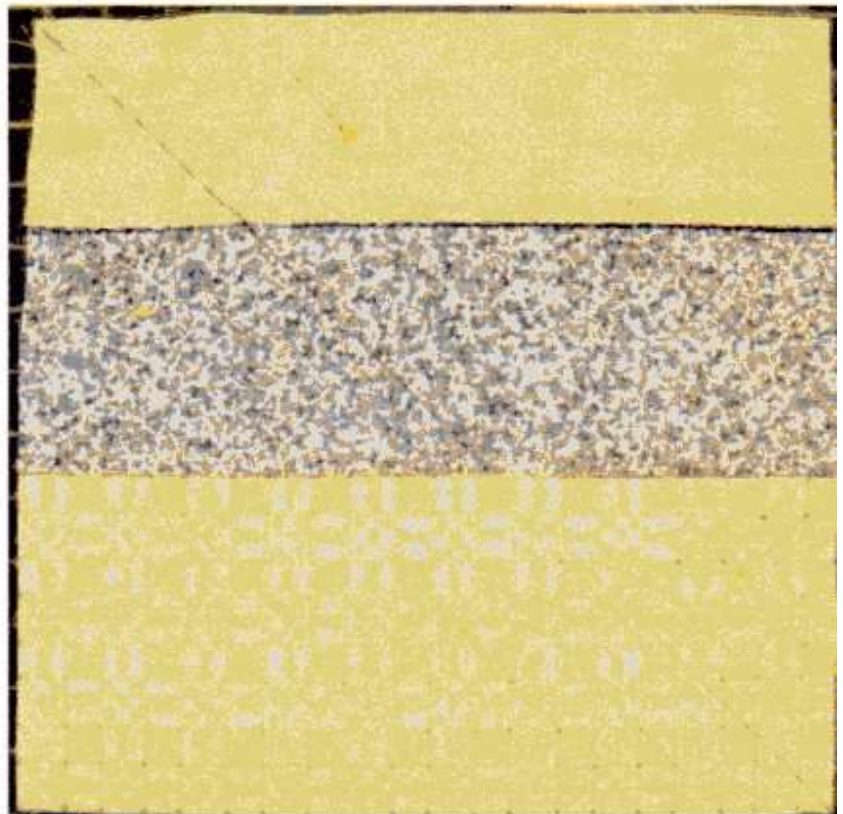
- ❖ Fabrics needed: #5
- ❖ You will also need the pieced block made in installment 5.

Step 1:

Cut Fabric #5 into (2) 12 7/8" strips X the width of the fabric
Sub-cut these strips into (5) 12 7/8" X 12 7/8" squares.

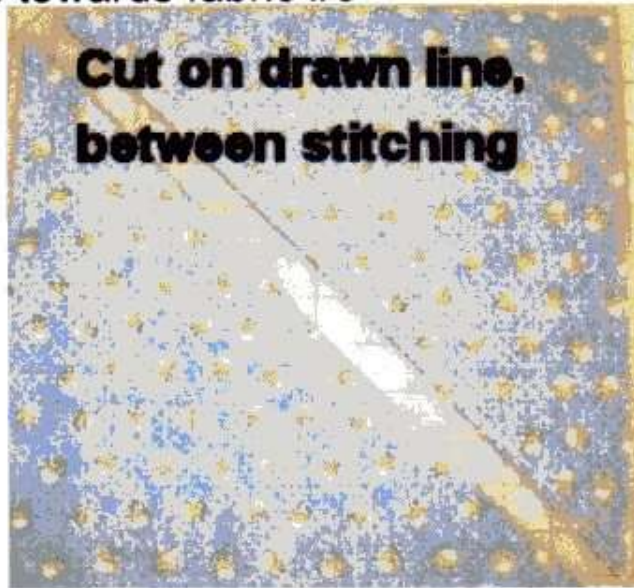
Step 2:

Take a 12 7/8" block you made in the last (5th) installment and match it, right sides together, with the solid fabric#5 12 7/8" block. Pin to hold together. Stitch with a scant 1/4" seam on both sides of the diagonal line that you drew on the pieced block from the 5th installment. Repeat for all 5 blocks.



Step 3:

Cut blocks apart on drawn lines, between stitching lines. Press seams towards fabric #5



Step 4:

You will now have a total of 10 of these blocks. Five will have fabric #8 in the first vertical position and five will have fabric #4 in the first vertical position as shown.



Fabric #8



Fabric #4

**Congratulations! You've finished all of your blocks for your Mystery Quilt. Join me next week to assemble your blocks into the Rocky Mountain Ridges setting.
Happy Quilting!**

MAY BUS TRIP

Dates: May 1st & 2nd

Package includes:

1 night lodging, hot continental breakfast, 1 lunch, 1 dinner and stops at 5 quilt shops. Also includes baggage handling, driver's accommodations, and tour manager, all on a luxury motor coach. Prices are based on 50 paid travelers.

Reservations and deposits (at least 50%) are due by March 12. Balance is due by April 5.

The tour will be open to others outside our guild after March 15 to insure our 50 passengers otherwise the price will go up.

Prices: per person single occupancy - \$203.00
per person double occupancy - \$159.00
per person triple occupancy - \$146.00
per person quad occupancy - \$138.00

Price does not include gratuities for motor coach driver and tour manager. We will "pass the hat" for that.

To reserve your spot on the bus call:

Notch Above Tours
Gwendy Lauritzen
802 881 0661
Fax: 802 881 0663
824 West Lakeshore Drive, Suite 3
Colchester, VT 05446
www.notchabovetours.com
gwendy48@comcast.net
If anyone has questions they can call Andrea or Gwendy.
Andrea Blaisdell: 635-8389 or email: asblaisdell@yahoo.com.

Planned Stops:

Saturday:
Country Treasures in Chester, VT
Pickering Farms in Richmond, NH
The Bunkhouse Quilt Shop in Lyndeborough, NH
Overnight stay in Manchester, NH
Sunday:
Quilted Threads in Henniker, NH
Country Heart Quilters in Plymouth, NH

GUILD WEBSITE

Scott has the guild's website up and running. Here's the link: <http://www.commonthreadsvt.org/>. Check it out and explore. All the links are active, but some pages still need to have data to fill the subordinate web pages. Scott is looking for any items you'd like to have on the website; you can send them to me, and I'll get them to Scott. I plan to start taking pictures of the show and tell at the monthly meeting and have those pictures posted starting next month.

I hope everyone finds the website to be a useful tool.

Sharon